

CTLA-4 Monoclonal Antibody

catalog number: **AN200208P**

Note: Centrifuge before opening to ensure complete recovery of vial contents.

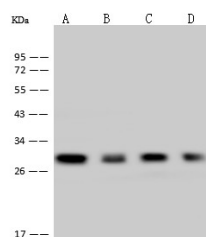
Description

Reactivity	Human
Immunogen	Recombinant Human CTLA-4 Protein
Host	Mouse
Isotype	IgG1
Clone	12F1
Purification	Protein A
Buffer	0.2 µm filtered solution in PBS

Applications Recommended Dilution

WB	1:500-1:2000
-----------	--------------

Data



Western Blot with CTLA4 Monoclonal Antibody at dilution of 1:500 dilution. Lane A: Raji Whole Cell Lysate, Lane B: MOLT-4 Whole Cell Lysate, Lane C: K562 Whole Cell Lysate, Lane D: Jurkat Whole Cell Lysate, Lysates/proteins at 30 µg per lane.

Observed-MW:30 kDa

Calculated-MW:25 kDa

Preparation & Storage

Storage	This antibody can be stored at 2°C-8°C for one month without detectable loss of activity. Antibody products are stable for twelve months from date of receipt when stored at -20°C to -80°C. Preservative-Free. Avoid repeated freeze-thaw cycles.
Shipping	Ice bag

Background

This gene is a member of the immunoglobulin superfamily and encodes a protein which transmits an inhibitory signal to T cells. The protein contains a V domain, a transmembrane domain, and a cytoplasmic tail. Alternate transcriptional splice variants, encoding different isoforms, have been characterized. The membrane-bound isoform functions as a homodimer interconnected by a disulfide bond, while the soluble isoform functions as a monomer. Mutations in this gene have been associated with insulin-dependent diabetes mellitus, Graves disease, Hashimoto thyroiditis, celiac disease, systemic lupus erythematosus, thyroid-associated orbitopathy, and other autoimmune diseases.

For Research Use Only