

CRISPLD2 Polyclonal Antibody

catalog number: E-AB-64496

Note: Centrifuge before opening to ensure complete recovery of vial contents.

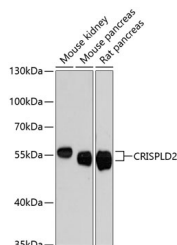
Description

Reactivity	Mouse;Rat
Immunogen	Recombinant fusion protein of human CRISPLD2 (NP_113664.1).
Host	Rabbit
Isotype	IgG
Purification	Affinity purification
Buffer	Phosphate buffered solution, pH 7.4, containing 0.05% stabilizer and 50% glycerol.

Applications Recommended Dilution

WB	1:500-1:2000
-----------	--------------

Data



Western blot analysis of extracts of various cell lines using CRISPLD2 Polyclonal Antibody at dilution of 1:3000.

Observed-MW:56 kDa

Calculated-MW:13 kDa/17 kDa/42 kDa/51 kDa/55 kDa

Preparation & Storage

Storage	Store at -20°C Valid for 12 months. Avoid freeze / thaw cycles.
Shipping	The product is shipped with ice pack, upon receipt, store it immediately at the temperature recommended.

Background

CRISPLD2 (Cysteine Rich Secretory Protein LCCL Domain Containing 2) is a Protein Coding gene. Diseases associated with CRISPLD2 include Orofacial Cleft 15 and Cleft Lip. Among its related pathways are Innate Immune System. Gene Ontology (GO) annotations related to this gene include heparin binding and glycosaminoglycan binding. An important paralog of this gene is CRISPLD1.

For Research Use Only