

FSHR Polyclonal Antibody

catalog number: E-AB-70134

Note: Centrifuge before opening to ensure complete recovery of vial contents.

Description

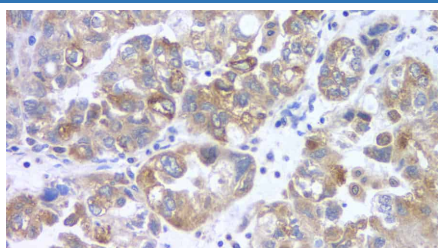
Reactivity	Human;Mouse;Rat
Immunogen	KLH conjugated Synthetic peptide corresponding to Mouse FSHR
Host	Rabbit
Isotype	IgG
Purification	Affinity purification
Conjugation	Unconjugated
Buffer	Phosphate buffered solution, pH 7.4, containing 0.05% stabilizer, 1% protein protectant and 50% glycerol.

Applications

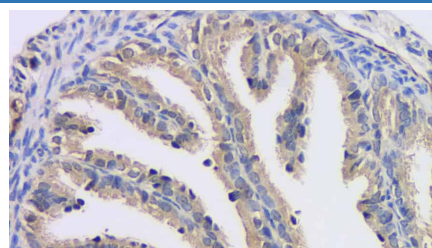
Recommended Dilution

IHC	1:200-1:1000
------------	--------------

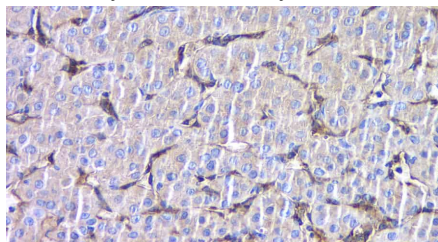
Data



Immunofluorescence analysis of paraffin-embedded rat colon using FSHR Polyclonal Antibody at dilution of 1:400.



Immunofluorescence analysis of paraffin-embedded rat colon using FSHR Polyclonal Antibody at dilution of 1:400.



Immunofluorescence analysis of paraffin-embedded rat colon using FSHR Polyclonal Antibody at dilution of 1:400.

Preparation & Storage

Storage	Store at -20°C Valid for 12 months. Avoid freeze / thaw cycles.
Shipping	The product is shipped with ice pack, upon receipt, store it immediately at the temperature recommended.

Background

The protein encoded by this gene belongs to family 1 of G-protein coupled receptors. It is the receptor for follicle stimulating hormone and functions in gonad development. Mutations in this gene cause ovarian dysgenesis type 1, and also ovarian hyperstimulation syndrome. Alternative splicing results in multiple transcript variants.

For Research Use Only