

## Recombinant CDC42 Monoclonal Antibody

**catalog number: E-AB-81545**

**Note:** Centrifuge before opening to ensure complete recovery of vial contents.

### Description

<b>Reactivity</b>	Human;Rat
<b>Immunogen</b>	Recombinant protein of human CDC42
<b>Host</b>	Rabbit
<b>Isotype</b>	IgG
<b>Clone</b>	R01-1C7
<b>Purification</b>	Affinity Purified
<b>Buffer</b>	50mM Tris-Glycine(pH 7.4), 0.15M NaCl, 40% Glycerol, 0.05% stabilizer and 0.05% protective protein.

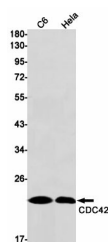
### Applications

**WB**

### Recommended Dilution

1:1000-1:2000

### Data



Western blot detection of CDC42 in C6,Hela cell lysates using CDC42 Rabbit mAb(1:1000 diluted).Predicted band size:21kDa.Observed band size:21kDa.

**Observed-MW:21 kDa**

**Calculated-MW:21 kDa**

### Preparation & Storage

**Storage**

Store at -20°C Valid for 12 months. Avoid freeze / thaw cycles.

**Shipping**

The product is shipped with ice pack,upon receipt,store it immediately at the temperature recommended.

### Background

The protein encoded by this gene is a small GTPase of the Rho-subfamily, which regulates signaling pathways that control diverse cellular functions including cell morphology, migration, endocytosis and cell cycle progression. This protein is highly similar to *Saccharomyces cerevisiae* Cdc 42, and is able to complement the yeast *cdc42-1* mutant. The product of oncogene *Dbl* was reported to specifically catalyze the dissociation of GDP from this protein. This protein could regulate actin polymerization through its direct binding to Neural Wiskott-Aldrich syndrome protein (N-WASP), which subsequently activates Arp2/3 complex. Alternative splicing of this gene results in multiple transcript variants.

### For Research Use Only