

Recombinant Human MOG Protein (Human Cells, His Tag)

Catalog Number: PKSH032769

Note: Centrifuge before opening to ensure complete recovery of vial contents.

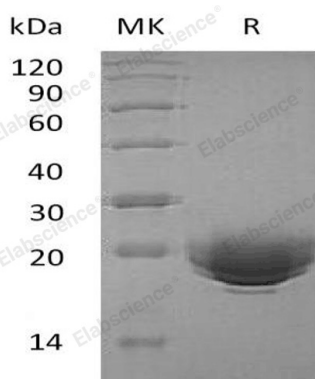
Description

| | |
|----------------------|---|
| Species | Human |
| Source | HEK293 Cells-derived Human MOG protein Gly30-Gly154, with an C-terminal His |
| Calculated MW | 15.3 kDa |
| Observed MW | 18-25 kDa |
| Accession | Q16653 |
| Bio-activity | Not validated for activity |

Properties

| | |
|-----------------------|---|
| Purity | > 95 % as determined by reducing SDS-PAGE. |
| Endotoxin | < 1.0 EU per µg of the protein as determined by the LAL method. |
| Storage | Generally, lyophilized proteins are stable for up to 12 months when stored at -20 to -80°C. Reconstituted protein solution can be stored at 4-8°C for 2-7 days. Aliquots of reconstituted samples are stable at < -20°C for 3 months. |
| Shipping | This product is provided as lyophilized powder which is shipped with ice packs. |
| Formulation | Lyophilized from a 0.2 µm filtered solution of 20mM PB, 150mM NaCl, pH 7.4. Normally 5% - 8% trehalose, mannitol and 0.01% Tween 80 are added as protectants before lyophilization. |
| Reconstitution | Please refer to the specific buffer information in the printed manual. Please refer to the printed manual for detailed information. |

Data



> 95 % as determined by reducing SDS-PAGE.

Background

Myelin Oligodendrocyte Glycoprotein (MOG) is a transmembrane protein; which is expressed exclusively in the CNS. MOG contains a single Ig-domain exposed to the extracellular space which allows autoantibodies easy access. MOG protein has been identified as a crucial autoantigen for multiple sclerosis in humans. MOG is capable to produce a demyelinating multiple sclerosis-like disease in experimental animals; namely experimental autoimmune encephalomyelitis (EAE) in rodents and monkeys.

For Research Use Only

Toll-free: 1-888-852-8623
Web: www.elabscience.com

Tel: 1-832-243-6086
Email: techsupport@elabscience.com

Fax: 1-832-243-6017