

CPLX4 Polyclonal Antibody

catalog number: **E-AB-66288**

Note: Centrifuge before opening to ensure complete recovery of vial contents.

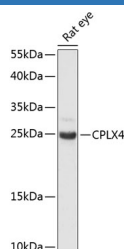
Description

Reactivity	Rat
Immunogen	Recombinant fusion protein of human CPLX4 (NP_857637.1).
Host	Rabbit
Isotype	IgG
Purification	Affinity purification
Buffer	Phosphate buffered solution, pH 7.4, containing 0.05% stabilizer and 50% glycerol.

Applications Recommended Dilution

WB	1:500-1:2000
-----------	--------------

Data



Western blot analysis of extracts of Rat eye using CPLX4
Polyclonal Antibody at dilution of 1:3000.

Observed-MV:18 kDa

Calculated-MV:18 kDa

Preparation & Storage

Storage	Store at -20°C Valid for 12 months. Avoid freeze / thaw cycles.
Shipping	The product is shipped with ice pack, upon receipt, store it immediately at the temperature recommended.

Background

This gene likely encodes a member of the complexin family. The encoded protein may be involved in synaptic vesicle exocytosis.

For Research Use Only