

EMG1 Polyclonal Antibody

catalog number: **E-AB-92594**

Note: Centrifuge before opening to ensure complete recovery of vial contents.

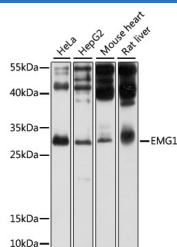
Description

Reactivity	Human;Mouse;Rat
Immunogen	Recombinant fusion protein of human EMG1
Host	Rabbit
Isotype	IgG
Purification	Affinity purification
Buffer	Phosphate buffered solution, pH 7.4, containing 0.05% stabilizer and 50% glycerol.

Applications

WB	1:500-1:2000
-----------	--------------

Data



Western blot analysis of extracts of various cell lines using EMG1 Polyclonal Antibody at 1:1000 dilution.

Observed-MV:27 kDa

Calculated-MV:26 kDa

Preparation & Storage

Storage	Store at -20°C Valid for 12 months. Avoid freeze / thaw cycles.
Shipping	The product is shipped with ice pack, upon receipt, store it immediately at the temperature recommended.

Background

This gene encodes an essential, conserved eukaryotic protein that methylates pseudouridine in 18S rRNA. The related protein in yeast is a component of the small subunit processome and is essential for biogenesis of the ribosomal 40S subunit. A mutation in this gene has been associated with Bowen-Conradi syndrome. Alternative splicing results in multiple transcript variants.

For Research Use Only