

## Recombinant Human PPM1G/PP2C-gamma Protein (His Tag)

**Catalog Number:** PKSH032970

**Note:** Centrifuge before opening to ensure complete recovery of vial contents.

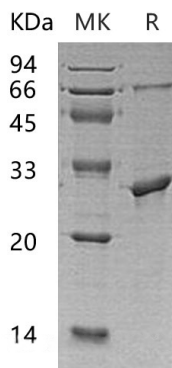
### Description

<b>Species</b>	Human
<b>Source</b>	E.coli-derived Human PPM1G;PP2C-gamma protein Met317-Asp546, with an C-terminal His
<b>Calculated MW</b>	26.2 kDa
<b>Observed MW</b>	30 kDa
<b>Accession</b>	O15355
<b>Bio-activity</b>	Not validated for activity

### Properties

<b>Purity</b>	> 95 % as determined by reducing SDS-PAGE.
<b>Concentration</b>	Subject to label value.
<b>Endotoxin</b>	< 1.0 EU per µg of the protein as determined by the LAL method.
<b>Storage</b>	Store at < -20°C, stable for 6 months. Please minimize freeze-thaw cycles.
<b>Shipping</b>	This product is provided as liquid. It is shipped at frozen temperature with blue ice/gel packs. Upon receipt, store it immediately at < -20°C.
<b>Formulation</b>	Supplied as a 0.2 µm filtered solution of 25mM Tris-HCl, 1mM DTT, 1mM EDTA, 2mM β-ME, 20% Glycerol, pH 7.5.

### Data



> 95 % as determined by reducing SDS-PAGE.

### Background

Protein Phosphatase 1G (PP1MG) is a cytoplasmic protein that belongs to the PP2C family. PPM1G is widely expressed; it is abundant in testis; skeletal muscle; and heart. PPM1G is a negative regulator of cell stress response pathways. PPM1G is responsible for the dephosphorylation of Pre-mRNA splicing factors; an important factor for the formation of functional spliceosome. PPM1G also plays a role in regulating cell cycle progression.