

## PE/Cyanine5.5 Anti-Human HLA-A2,B7 Antibody[BB7.6]

Catalog Number: AN00634I

Note: Centrifuge before opening to ensure complete recovery of vial contents.

### Description

<b>Reactivity</b>	Human
<b>Host</b>	Mouse
<b>Isotype</b>	Mouse IgG1
<b>Clone No.</b>	BB7.6
<b>Isotype Control</b>	PE/Cyanine5.5 Mouse IgG1, κ Isotype Control[MOPC-21] [Product E-AB-F09792I]
<b>Conjugation</b>	PE/Cyanine 5.5
<b>Conjugation Information</b>	PE/Cyanine5.5 is designed to be excited by the Blue (488 nm), Green (532 nm) and yellow-green (561 nm) lasers and detected using an optical filter centered near 690 nm (e.g., a 690/50 nm bandpass filter).
<b>Storage Buffer</b>	Phosphate buffered solution, pH 7.2, containing 0.09% sodium azide and 1% BSA.

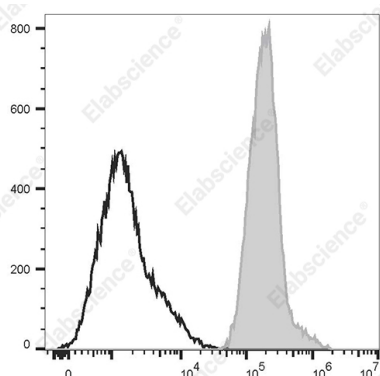
### Applications

### Recommended usage

#### FCM

Each lot of this antibody is quality control tested by flow cytometric analysis. **The amount of the reagent is suggested to be used 5 μL of antibody per test (millie cells in 100 μL staining volume or per 154 μL of whole blood).** Please check your vial before the experiment. Since applications vary, the appropriate dilutions must be determined for individual use.

### Data



Staining of normal human peripheral blood cells with PE/Cyanine5.5 Anti-Human HLA-A2,B7 Antibody[BB7.6] (filled gray histogram) or PE/Cyanine5.5 Mouse IgG1, κ Isotype Control (empty black histogram). Cells in the lymphocytes gate were used for analysis.

### Preparation & Storage

<b>Storage</b>	Keep as concentrated solution. This product can be stored at 2-8°C for 12 months. Please protected from prolonged exposure to light and do not freeze.
<b>Shipping</b>	Ice bag

### Antigen Information

<b>Alternate Names</b>	MHC-class I;HLA-B*07;HLA Class I histocompatibility antigen B alpha chain
<b>Uniprot ID</b>	P04439

### For Research Use Only

**Gene ID**

3105

**Background**

HLA-A2 is most common in Northern Asia and North America populations. MHC class I antigens associated with  $\beta$ 2-microglobulin are expressed by all human nucleated cells. MHC class I molecules are involved in presentation of antigens to CD8+ T cells, playing an important role in cell-mediated immune responses and tumor surveillance. HLA-B belongs to the HLA class I heavy chain paralogues. HLA-B7 is a serotype of HLA-A-B and one of the common HLA types. MHC class I heavy chains associate with  $\beta$ 2-microglobulin and are expressed on nearly all nucleated cells. MHC class I molecules are involved in the presentation of antigens to CD8+ T cells and thereby play an important role in cell-mediated immune responses and immune surveillance.