

Recombinant beta Tubulin Monoclonal Antibody

catalog number: **AN301780L**

Note: Centrifuge before opening to ensure complete recovery of vial contents.

Description

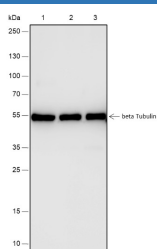
Reactivity	Human;Rat;Mouse
Immunogen	Recombinant human beta Tubulin fragment
Host	Rabbit
Isotype	IgG, κ
Clone	A488
Purification	Protein A purified
Buffer	PBS, 50% glycerol, 0.05% Proclin 300, 0.05% protein protectant.

Applications

Recommended Dilution

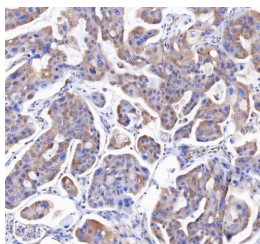
WB	1:500-1:2000
IHC	1:50-1:100
IF	1:200-1:500
IP	1:50-1:100

Data

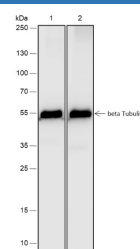
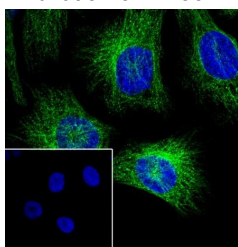


Western Blot with beta Tubulin Monoclonal Antibody at dilution of 1:2000. Lane 1: HeLa, Lane 2: NIH/3T3, Lane 3: PC-12

Observed-MW:55 kDa
Calculated-MW:50 kDa

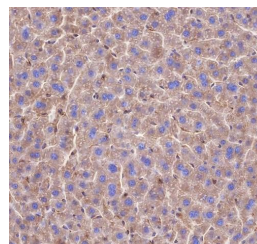


Immunohistochemistry of paraffin-embedded Human lung adenocarcinoma using beta Tubulin Monoclonal Antibody at dilution of 1:100.

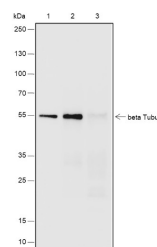


Western Blot with beta Tubulin Monoclonal Antibody at dilution of 1:2000. Lane 1: Mouse brain, Lane 2: Rat brain

Observed-MW:55 kDa
Calculated-MW:50 kDa



Immunohistochemistry of paraffin-embedded Mouse liver using beta Tubulin Monoclonal Antibody at dilution of 1:100.



For Research Use Only

Toll-free: 1-888-852-8623
Web: www.elabscience.com

Tel: 1-832-243-6086
Email: techsupport@elabscience.com

Fax: 1-832-243-6017

Rev. V1.1

Immunofluorescent analysis of (4% Paraformaldehyde) fixed HeLa cells using anti-beta Tubulin Monoclonal Antibody at dilution of 1:500.

Immunoprecipitation analysis using anti-beta Tubulin Monoclonal Antibody. Western blot was performed from the immunoprecipitate using beta Tubulin Monoclonal Antibody at a dilution of 1:100. Lane 1: 5% Input, Lane 2: beta Tubulin Monoclonal Antibody, Lane 3: Rabbit monoclonal IgG Isotype

Observed-MW:55 kDa

Calculated-MW:50 kDa

Preparation & Storage

Storage Store at -20°C Valid for 12 months. Avoid freeze / thaw cycles.
Shipping Ice bag

Background

Beta tubulin forms a dimer with alpha tubulin and acts as a major structural component of microtubules.