

## GLRA1 Polyclonal Antibody

**catalog number: E-AB-17324**

**Note:** Centrifuge before opening to ensure complete recovery of vial contents.

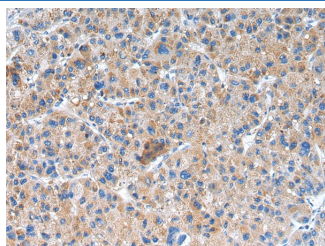
### Description

<b>Reactivity</b>	Human;Mouse;Rat
<b>Immunogen</b>	Synthetic peptide of human GLRA1
<b>Host</b>	Rabbit
<b>Isotype</b>	IgG
<b>Purification</b>	Affinity purification
<b>Buffer</b>	Phosphate buffered solution, pH 7.4, containing 0.05% stabilizer and 50% glycerol.

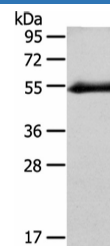
### Applications Recommended Dilution

<b>WB</b>	1:500-2000
<b>IHC</b>	1:10-50

### Data



Immunohistochemistry of paraffin-embedded Human liver cancer using GLRA1 Polyclonal Antibody at dilution of 1/20



Western Blot analysis of Human placenta tissue using GLRA1 Polyclonal Antibody at dilution of 1/250

**Calculated-MW:53 kDa**

### Preparation & Storage

<b>Storage</b>	Store at -20°C Valid for 12 months. Avoid freeze / thaw cycles.
<b>Shipping</b>	The product is shipped with ice pack, upon receipt, store it immediately at the temperature recommended.

### Background

The protein encoded by this gene is a subunit of a pentameric inhibitory glycine receptor. The receptor mediates postsynaptic inhibition in the central nervous system. Defects in this gene are a cause of startle disease (STHE), also known as hereditary hyperekplexia or congenital stiff-person syndrome. Three transcript variants encoding different isoforms have been found for this gene.

### For Research Use Only