

## Recombinant Human GPIHBP1 (C-Fc)

**Catalog Number:** PKSH033927

**Note:** Centrifuge before opening to ensure complete recovery of vial contents.

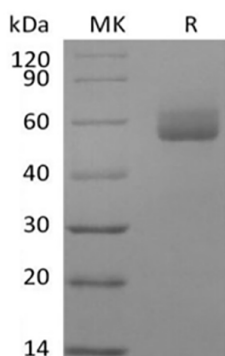
### Description

<b>Species</b>	Human
<b>Source</b>	HEK293 Cells-derived Human GPIHBP1 protein Thr22-Gly151, with an C-terminal Fc
<b>Mol_Mass</b>	41.7 kDa
<b>Accession</b>	Q8IV16
<b>Bio-activity</b>	Not validated for activity

### Properties

<b>Purity</b>	> 95 % as determined by reducing SDS-PAGE.
<b>Endotoxin</b>	< 1.0 EU per µg of the protein as determined by the LAL method.
<b>Storage</b>	Generally, lyophilized proteins are stable for up to 12 months when stored at -20 to -80 °C. Reconstituted protein solution can be stored at 4-8°C for 2-7 days. Aliquots of reconstituted samples are stable at < -20°C for 3 months.
<b>Shipping</b>	This product is provided as lyophilized powder which is shipped with ice packs.
<b>Formulation</b>	Lyophilized from a 0.2 µm filtered solution of PBS, pH 7.4. Normally 5% - 8% trehalose, mannitol and 0.01% Tween 80 are added as protectants before lyophilization. Please refer to the specific buffer information in the printed manual.
<b>Reconstitution</b>	Please refer to the printed manual for detailed information.

### Data



> 95 % as determined by reducing SDS-PAGE.

### Background

Glycosylphosphatidylinositol-anchored high density lipoprotein-binding protein 1 (GPIHBP1) is a member of the Ly6 family of proteins, binds LPL in the subendothelial spaces and transports it to the capillary lumen. GPIHBP1 is an important regulator of triglyceride metabolism by increasing the efficiency of hydrolysis by LPL and uptake of fatty acids. GPIHBP1 was positively correlated with LPL, and GPIHBP1 is a better marker for body weight decrease than LPL.

### For Research Use Only