

IKKε Polyclonal Antibody

catalog number: E-AB-93155

Note: Centrifuge before opening to ensure complete recovery of vial contents.

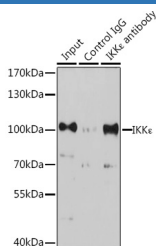
Description

Reactivity	Human;Mouse
Immunogen	Recombinant fusion protein of human IKKε
Host	Rabbit
Isotype	IgG
Purification	Affinity purification
Buffer	Phosphate buffered solution, pH 7.4, containing 0.05% stabilizer and 50% glycerol.

Applications

Applications	Recommended Dilution
WB	1:500-1:2000
IP	1:50-1:200

Data



Immunoprecipitation analysis of 200ug extracts of K-562 cells, using 3 ug IKKε Polyclonal Antibody. Western blot was performed from the immunoprecipitate using IKKε Polyclonal Antibody at a dilution of 1:1000.

Observed-MW:110 kDa

Calculated-MW:70 kDa/80 kDa

Preparation & Storage

Storage	Store at -20°C Valid for 12 months. Avoid freeze / thaw cycles.
Shipping	The product is shipped with ice pack,upon receipt,store it immediately at the temperature recommended.

Background

IKBKE is a noncanonical I-kappa-B (see MIM 164008) kinase (IKK) that is essential for regulating antiviral signaling pathways. IKBKE has also been identified as a breast cancer (MIM 114480) oncogene and is amplified and overexpressed in over 30% of breast carcinomas and breast cancer cell lines.

For Research Use Only