

## RNF166 Polyclonal Antibody

**catalog number: E-AB-63875**

**Note:** Centrifuge before opening to ensure complete recovery of vial contents.

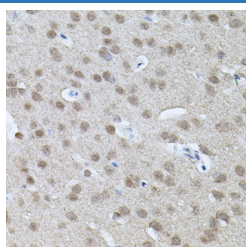
### Description

<b>Reactivity</b>	Human;Mouse;Rat
<b>Immunogen</b>	A synthetic peptide of human RNF166 (NP_849163.1).
<b>Host</b>	Rabbit
<b>Isotype</b>	IgG
<b>Purification</b>	Affinity purification
<b>Buffer</b>	Phosphate buffered solution, pH 7.4, containing 0.05% stabilizer and 50% glycerol.

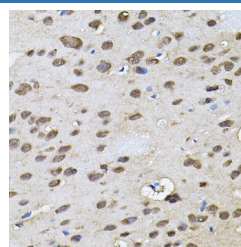
### Applications Recommended Dilution

<b>IHC</b>	1:50-1:200
------------	------------

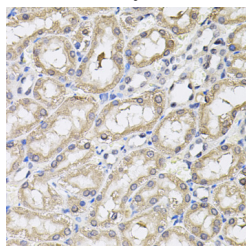
### Data



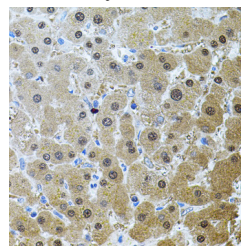
Immunohistochemistry of paraffin-embedded Mouse brain using RNF166 Polyclonal Antibody



Immunohistochemistry of paraffin-embedded Rat brain using RNF166 Polyclonal Antibody



Immunohistochemistry of paraffin-embedded Rat kidney using RNF166 Polyclonal Antibody



Immunohistochemistry of paraffin-embedded Human liver damage using RNF166 Polyclonal Antibody

### Preparation & Storage

<b>Storage</b>	Store at -20°C Valid for 12 months. Avoid freeze / thaw cycles.
<b>Shipping</b>	The product is shipped with ice pack, upon receipt, store it immediately at the temperature recommended.

### Background

RNF166 (Ring Finger Protein 166) is a Protein Coding gene. Diseases associated with RNF166 include Generalized Epilepsy With Febrile Seizures Plus, Type 9 and Myopathy, Congenital, Compton-North. An important paralog of this gene is RNF114.

### For Research Use Only