

## PerCP/Cyanine5.5 Anti-Human HLA-DQ Antibody[1a3]

Catalog Number: AN00421J

**Note:** Centrifuge before opening to ensure complete recovery of vial contents.

### Description

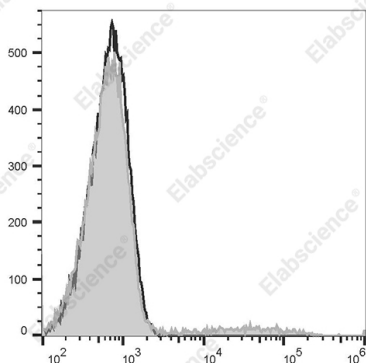
Reactivity	Human
Host	Mouse
Isotype	Mouse IgG2a, $\kappa$
Clone No.	1a3
Isotype Control	PerCP/Cyanine5.5 Mouse IgG2a, $\kappa$ Isotype Control[C1.18.4] [Product E-AB-F09802J]
Conjugation	PerCP/Cyanine 5.5
Conjugation Information	PerCP/Cyanine5.5 is designed to be excited by the blue laser (488 nm) and detected using an optical filter centered near 675 nm (e.g., a 690/50 nm bandpass filter).
Storage Buffer	Phosphate buffered solution, pH 7.2, containing 0.09% stabilizer and 1% protein protectant

### Applications

### Recommended usage

FCM	Each lot of this antibody is quality control tested by flow cytometric analysis. <b>The amount of the reagent is suggested to be used 5 <math>\mu</math>L of antibody per test (million cells in 100 <math>\mu</math>L staining volume or per 100 <math>\mu</math>L of whole blood).</b> Please check your vial before the experiment. Since applications vary, the appropriate dilutions must be determined for individual use.
-----	--

### Data



Staining of normal human peripheral blood cells with PerCP/Cyanine5.5 Anti-Human HLA-DQ Antibody[1a3] (filled gray histogram) or PerCP/Cyanine5.5 Mouse IgG2a Isotype Control (empty black histogram). Cells in the lymphocytes gate were used for analysis.

### Preparation & Storage

Storage	Keep as concentrated solution. This product can be stored at 2-8°C for 12 months. Please protected from prolonged exposure to light and do not freeze.
Shipping	Ice bag

### Antigen Information

Alternate Names	MHC class II DQ monomorphic antigen;MHC II
Uniprot ID	P01906

### For Research Use Only

**Gene ID**

3117

**Background**

HLA-DQ is also known as MHC class II DQ monomorphic antigen. The major histocompatibility complex is composed of two heterodimeric glycoproteins ( $\alpha$  and  $\beta$  chains) with apparent molecular weights of 27 and 32 kD. In contrast to other MHC class II molecules, both polypeptide chains of HLA-DQ are polymorphic, with the  $\alpha$  chain showing an extremely high degree of polymorphism. HLA-DQ is expressed on B cells in the peripheral blood, and weakly expressed on activated T cells and some monocytes. HLA-DQ is absent on hematopoietic progenitors, resting T cells, erythrocytes, and platelets. HLA-DQ is expressed after HLA-DR and HLA-DP in hematopoietic development. HLA-DQ presents peptide fragments mainly from degraded intravesicular and extracellular proteins to CD4+ T lymphocytes. Specific alleles of HLA-DQ have been linked to the pathogenesis of several autoimmune diseases (including diabetes), both as a susceptibility and resistance factor depending on the particular polymorphism.