

## Calmodulin 1/2/3 Polyclonal Antibody

catalog number: **E-AB-90310**

**Note:** Centrifuge before opening to ensure complete recovery of vial contents.

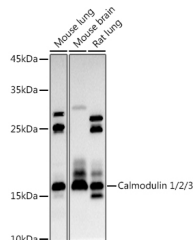
### Description

<b>Reactivity</b>	Human;Mouse;Rat
<b>Immunogen</b>	A synthetic peptide of human Calmodulin 1/2/3
<b>Host</b>	Rabbit
<b>Isotype</b>	IgG
<b>Purification</b>	Affinity purification
<b>Buffer</b>	Phosphate buffered solution, pH 7.4, containing 0.05% stabilizer and 50% glycerol.

### Applications Recommended Dilution

<b>WB</b>	1:500-1:2000
-----------	--------------

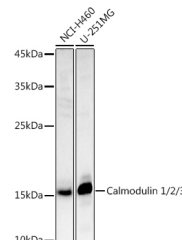
### Data



Western blot analysis of extracts of various cell lines using Calmodulin 1/2/3 Polyclonal Antibody at 1:1000 dilution.

**Observed-MW:17 kDa**

**Calculated-MW:16 kDa**



Western blot analysis of extracts of various cell lines using Calmodulin 1/2/3 Polyclonal Antibody at 1:1000 dilution.

**Observed-MW:17 kDa**

**Calculated-MW:16 kDa**

### Preparation & Storage

<b>Storage</b>	Store at -20°C Valid for 12 months. Avoid freeze / thaw cycles.
<b>Shipping</b>	The product is shipped with ice pack, upon receipt, store it immediately at the temperature recommended.

### Background

This gene encodes a member of the EF-hand calcium-binding protein family. It is one of three genes which encode an identical calcium binding protein which is one of the four subunits of phosphorylase kinase. Two pseudogenes have been identified on chromosome 7 and X. Multiple transcript variants encoding different isoforms have been found for this gene.

### For Research Use Only