

Recombinant IMPDH2 Monoclonal Antibody

catalog number: **E-AB-81572**

Note: Centrifuge before opening to ensure complete recovery of vial contents.

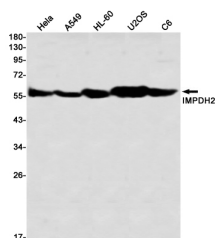
Description

Reactivity	Human;Mouse;Rat
Immunogen	A synthetic peptide of human IMPDH2
Host	Rabbit
Isotype	IgG
Clone	R06-1B8
Purification	Affinity Purified
Buffer	50mM Tris-Glycine(pH 7.4), 0.15M NaCl, 40% Glycerol, 0.05% stabilizer and 0.05% protective protein.

Applications

Applications	Recommended Dilution
WB	1:1000-1:2000
IHC	1:50-1:100

Data



Western blot detection of IMPDH2 in HeLa, A549, HL-60, U2OS, C6 using IMPDH2 Rabbit mAb (1:1000 diluted)

Observed-MW: 56 kDa

Calculated-MW: 56 kDa



Immunohistochemistry of IMPDH2 in paraffin-embedded Human breast cancer tissue using IMPDH2 Rabbit mAb at dilution 1:50

Preparation & Storage

Storage	Store at -20°C Valid for 12 months. Avoid freeze / thaw cycles.
Shipping	The product is shipped with ice pack, upon receipt, store it immediately at the temperature recommended.

Background

This gene encodes the rate-limiting enzyme in the de novo guanine nucleotide biosynthesis. It is thus involved in maintaining cellular guanine deoxy- and ribonucleotide pools needed for DNA and RNA synthesis. The encoded protein catalyzes the NAD-dependent oxidation of inosine-5'-monophosphate into xanthine-5'-monophosphate, which is then converted into guanosine-5'-monophosphate. This gene is up-regulated in some neoplasms, suggesting it may play a role in malignant transformation.

For Research Use Only