

## Recombinant LAMP2 Monoclonal Antibody

catalog number: **AN301030L**

**Note:** Centrifuge before opening to ensure complete recovery of vial contents.

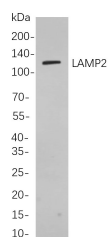
### Description

|                     |   |
|---------------------|---|
| <b>Reactivity</b>   | Human;Mouse   |
| <b>Immunogen</b>    | Recombinant Human LAMP2 protein                                 |
| <b>Host</b>         | Rabbit  |
| <b>Isotype</b>      | IgG, $\kappa$   |
| <b>Clone</b>        | B781  |
| <b>Purification</b> | Protein A   |
| <b>Buffer</b>       | PBS, 50% glycerol, 0.05% Proclin 300, 0.05% protein protectant. |

### Applications

| Applications | Recommended Dilution |
|--------------|----------------------|
| IHC          | 1:200-1:1000         |
| WB           | 1:1000-1:5000        |
| IF           | 1:200-1:1000         |
| ELISA        | 1:5000-1:20000       |

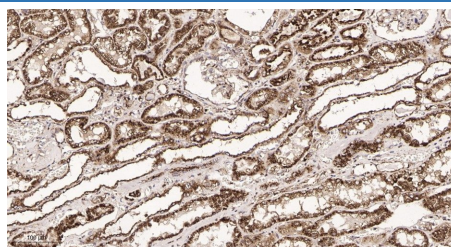
### Data



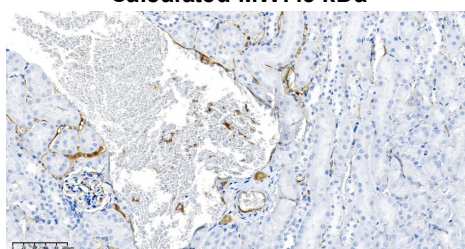
Western Blot with Recombinant LAMP2 Monoclonal Antibody at dilution of 1:1000 dilution. Lane A: Jurkat cells.

**Observed-MW:120 kDa**

**Calculated-MW:45 kDa**



Immunohistochemistry of paraffin-embedded human kidney tissue using Recombinant LAMP2 Monoclonal Antibody at dilution of 1:200.



Immunohistochemistry of paraffin-embedded rat kidney using Recombinant LAMP2 Monoclonal Antibody at dilution of 1:200.

### Preparation & Storage

|                 |   |
|-----------------|---|
| <b>Storage</b>  | Store at -20°C Valid for 12 months. Avoid freeze / thaw cycles. |
| <b>Shipping</b> | Ice bag   |

### Background

#### For Research Use Only

Toll-free: 1-888-852-8623  
Web: [www.elabscience.com](http://www.elabscience.com)

Tel: 1-832-243-6086  
Email: [techsupport@elabscience.com](mailto:techsupport@elabscience.com)

Fax: 1-832-243-6017

Rev. V1.2

The protein encoded by this gene is a member of a family of membrane glycoproteins. This glycoprotein provides selectins with carbohydrate ligands. It may play a role in tumor cell metastasis. It may also function in the protection, maintenance, and adhesion of the lysosome. Alternative splicing of this gene results in multiple transcript variants encoding distinct proteins.