

## LDHA Polyclonal Antibody

catalog number: E-AB-18030

**Note:** Centrifuge before opening to ensure complete recovery of vial contents.

### Description

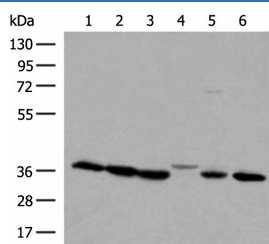
<b>Reactivity</b>	Human;Mouse;Rat
<b>Immunogen</b>	Synthetic peptide of human LDHA
<b>Host</b>	Rabbit
<b>Isotype</b>	IgG
<b>Purification</b>	Antigen affinity purification
<b>Conjugation</b>	Unconjugated
<b>Buffer</b>	Phosphate buffered solution, pH 7.4, containing 0.05% stabilizer and 50% glycerol.

### Applications

### Recommended Dilution

<b>WB</b>	1:500-1:2000
<b>IHC</b>	1:30-1:150

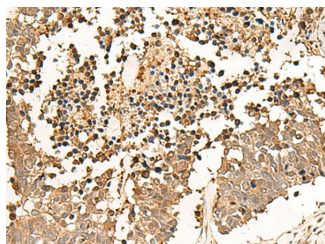
### Data



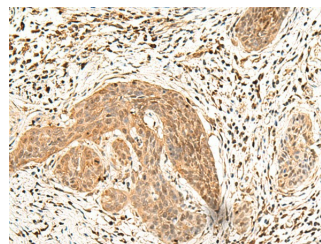
Western blot analysis of 293T and A375 cell lysates using LDHA Polyclonal Antibody at dilution of 1:250

**Observed-MW:Refer to figures**

**Calculated-MW:37 kDa**



Immunohistochemistry of paraffin-embedded Human lung cancer tissue using LDHA Polyclonal Antibody at dilution of 1:25(×200)



Immunohistochemistry of paraffin-embedded Human esophagus cancer tissue using LDHA Polyclonal Antibody at dilution of 1:25(×200)

### Preparation & Storage

<b>Storage</b>	Store at -20°C Valid for 12 months. Avoid freeze / thaw cycles.
<b>Shipping</b>	The product is shipped with ice pack, upon receipt, store it immediately at the temperature recommended.

### Background

## For Research Use Only

LDHA, also named as LDH-M and NY-REN-59, is an enzyme which catalyzes the inter-conversion of pyruvate and L-lactate with concomitant inter-conversion of NADH and NAD<sup>+</sup>. LDHA is found in most somatic tissues, though predominantly in muscle tissue and tumours, and belongs to the lactate dehydrogenase family. It has long been known that many human cancers have higher LDHA levels compared to normal tissues. It has also been shown that LDHA plays an important role in the development, invasion and metastasis of malignancies. Mutations in LDHA have been linked to exertional myoglobinuria. LDHA has some isoforms with MW 26-40 kDa.