

## Recombinant Alpha Skeletal Muscle Actin Monoclonal Antibody

catalog number: **AN301797L**

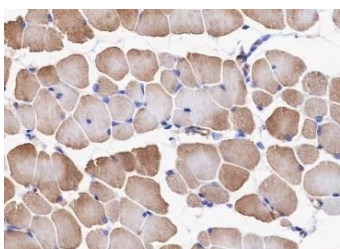
**Note:** Centrifuge before opening to ensure complete recovery of vial contents.

### Description

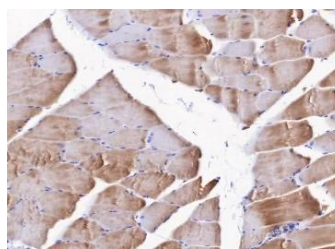
<b>Reactivity</b>	Human;Rat;Mouse
<b>Immunogen</b>	Recombinant human Alpha Skeletal Muscle fragment
<b>Host</b>	Rabbit
<b>Isotype</b>	IgG, $\kappa$
<b>Clone</b>	A509
<b>Purification</b>	Protein A purified
<b>Buffer</b>	PBS, 50% glycerol, 0.05% Proclin 300, 0.05% protein protectant.

### Applications Recommended Dilution

<b>WB</b>	1:1000-1:5000
<b>IHC</b>	1:200-1:1000
<b>IP</b>	1:25-1:50



Immunohistochemistry of paraffin-embedded Mouse skeletal muscle using Alpha Skeletal Muscle Actin Monoclonal Antibody at dilution of 1:1000.



Immunohistochemistry of paraffin-embedded Rat skeletal muscle using Alpha Skeletal Muscle Actin Monoclonal Antibody at dilution of 1:1000.

### Preparation & Storage

<b>Storage</b>	Store at -20°C Valid for 12 months. Avoid freeze / thaw cycles.
<b>Shipping</b>	Ice bag

### Background

The protein belongs to the actin family of proteins, which are highly conserved proteins that play a role in cell motility, structure and integrity. Alpha, beta and gamma actin isoforms have been identified, with alpha actins being a major constituent of the contractile apparatus, while beta and gamma actins are involved in the regulation of cell motility. This actin is an alpha actin that is found in skeletal muscle.

### For Research Use Only