

Recombinant Human DES protein (His Tag)

Catalog Number: PDEH100851



Note: Centrifuge before opening to ensure complete recovery of vial contents.

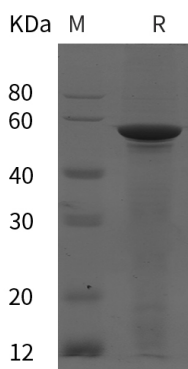
Description

Species	Human
Mol_Mass	51.5 kDa
Accession	P17661
Bio-activity	Not validated for activity

Properties

Purity	> 95% as determined by reducing SDS-PAGE.
Endotoxin	< 10 EU/mg of the protein as determined by the LAL method
Storage	Generally, lyophilized proteins are stable for up to 12 months when stored at -20 to -80 °C. Reconstituted protein solution can be stored at 4-8°C for 2-7 days. Aliquots of reconstituted samples are stable at < -20°C for 3 months.
Shipping	This product is provided as lyophilized powder which is shipped with ice packs.
Formulation	Lyophilized from a 0.2 µm filtered solution in PBS with 5% Trehalose and 5% Mannitol.
Reconstitution	It is recommended that sterile water be added to the vial to prepare a stock solution of 0.5 mg/mL. Concentration is measured by UV-Vis.

Data



> 95 % as determined by reducing SDS-PAGE.

Background

Desmin is a cytoplasmic protein and belongs to the intermediate filament family. It interacts with DST and MTM1. Desmin is only expressed in vertebrates, however homologous proteins are found in many organisms. Desmin is the main intermediate filament in mature skeletal, cardiac and smooth-muscle cells. DES functions as homopolymers to form a stable intracytoplasmic filamentous network connecting myofibrils to each other and to the plasma membrane. Defects in DES are cause of the myopathy myofibrillar type 1, cardiomyopathy dilated type II, and neurogenic scapuloperoneal syndrome Kaeser type.

For Research Use Only