

Recombinant Human MKK6 Protein (His & GST Tag)

Catalog Number: PKSH030415

Note: Centrifuge before opening to ensure complete recovery of vial contents.

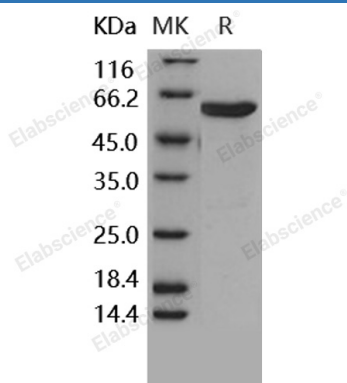
Description

Species	Human
Source	Baculovirus-Insect Cells-derived Human MKK6 protein Met 1-Asp 334, with an N-terminal His & GST
Calculated MW	65.3 kDa
Observed MW	60 kDa
Accession	P52564-1
Bio-activity	Not validated for activity

Properties

Purity	> 80 % as determined by reducing SDS-PAGE.
Concentration	Subject to label value.
Endotoxin	< 1.0 EU per µg of the protein as determined by the LAL method.
Storage	Store at < -20°C, stable for 6 months. Please minimize freeze-thaw cycles.
Shipping	This product is provided as liquid. It is shipped at frozen temperature with blue ice/gel packs. Upon receipt, store it immediately at < -20°C.
Formulation	Supplied as sterile solution of 20mM Tris, 500mM NaCl, pH 8.0

Data



> 80 % as determined by reducing SDS-PAGE.

Background

Dual specificity mitogen-activated protein kinase kinase 6, also known as MAP kinase kinase 6, MAPKK 6, MAPK / ERK kinase 6, SAPKK3, MAP2K6, and MKK6, is a protein that belongs to the protein kinase superfamily, STE Ser / Thr protein kinase family and MAP kinase kinase subfamily. MAP2K6 / MKK6 contains one protein kinase domain. Mitogen-activated protein kinases are members of a conserved cascade of kinases involved in many signal transduction pathways. They stimulate phosphorylation of transcription factors in response to extracellular signals such as growth factors, cytokines, ultraviolet light, and stress-inducing agents. MAP2K6 / MKK6 exists in a variety of alternatively spliced isoforms with distinct patterns of tissue expression. Isoform 2 of MAP2K6 / MKK6 is only expressed in skeletal muscle. Isoform 1 of MAP2K6 / MKK6 is expressed in skeletal muscle, heart, and to a lesser extent in liver or pancreas.

For Research Use Only

Toll-free: 1-888-852-8623
Web: www.elabscience.com

Tel: 1-832-243-6086
Email: techsupport@elabscience.com

Fax: 1-832-243-6017