

## MT-CYB Polyclonal Antibody

**catalog number: E-AB-93404**

**Note:** Centrifuge before opening to ensure complete recovery of vial contents.

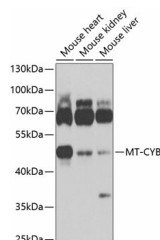
### Description

<b>Reactivity</b>	Human;Mouse;Rat
<b>Immunogen</b>	A synthetic peptide of mouse MT-CYB
<b>Host</b>	Rabbit
<b>Isotype</b>	IgG
<b>Purification</b>	Affinity purification
<b>Buffer</b>	Phosphate buffered solution, pH 7.4, containing 0.05% stabilizer and 50% glycerol.

### Applications Recommended Dilution

<b>WB</b>	1:200-1:1000
-----------	--------------

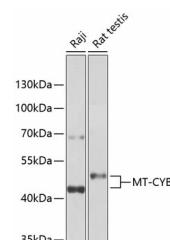
### Data



Western blot analysis of extracts of various cell lines using MT-CYB Polyclonal Antibody at 1:1000 dilution.

**Observed-MW:43 kDa**

**Calculated-MW:43 kDa**



Western blot analysis of extracts of various cell lines using MT-CYB Polyclonal Antibody at 1:1000 dilution.

**Observed-MW:43 kDa**

**Calculated-MW:43 kDa**

### Preparation & Storage

<b>Storage</b>	Store at -20°C Valid for 12 months. Avoid freeze / thaw cycles.
<b>Shipping</b>	The product is shipped with ice pack, upon receipt, store it immediately at the temperature recommended.

### Background

Component of the ubiquinol-cytochrome c reductase complex (complex III or cytochrome b-c1 complex that is part of the mitochondrial respiratory chain. The b-c1 complex mediates electron transfer from ubiquinol to cytochrome c. Contributes to the generation of a proton gradient across the mitochondrial membrane that is then used for ATP synthesis.

### For Research Use Only