

## PE/Cyanine5 Anti-Human CD62L Antibody[HI62L]

Catalog Number: E-AB-F1336G

**Note:** Centrifuge before opening to ensure complete recovery of vial contents.

### Description

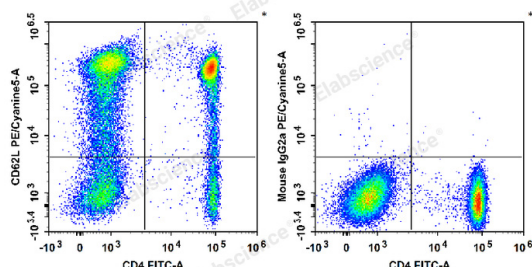
|                         |                                                                                                                                                                                                            |
|-------------------------|------------------------------------------------------------------------------------------------------------------------------------------------------------------------------------------------------------|
| Reactivity              | Human                                                                                                                                                                                                      |
| Host                    | Mouse                                                                                                                                                                                                      |
| Isotype                 | Mouse IgG2a, κ                                                                                                                                                                                             |
| Clone No.               | HI62L                                                                                                                                                                                                      |
| Isotype Control         | PE/Cyanine5 Mouse IgG2a, κ Isotype Control[C1.18.4] [Product E-AB-F09802G]                                                                                                                                 |
| Conjugation             | PE/Cyanine 5                                                                                                                                                                                               |
| Conjugation Information | PE/Cyanine5 is designed to be excited by the Blue (488 nm), Green (532 nm) and yellow-green (561 nm) lasers and detected using an optical filter centered near 670 nm (e.g., a 690/50 nm bandpass filter). |
| Storage Buffer          | Phosphate buffered solution, pH 7.2, containing 0.09% stabilizer and 1% protein protectant.                                                                                                                |

### Applications

### Recommended usage

|     |                                                                                                                                                                                                                                                                                                                                                                                     |
|-----|-------------------------------------------------------------------------------------------------------------------------------------------------------------------------------------------------------------------------------------------------------------------------------------------------------------------------------------------------------------------------------------|
| FCM | Each lot of this antibody is quality control tested by flow cytometric analysis. <b>The amount of the reagent is suggested to be used 5 μL of antibody per test (million cells in 100 μL staining volume or per 100 μL of whole blood).</b> Please check your vial before the experiment. Since applications vary, the appropriate dilutions must be determined for individual use. |
|-----|-------------------------------------------------------------------------------------------------------------------------------------------------------------------------------------------------------------------------------------------------------------------------------------------------------------------------------------------------------------------------------------|

### Data



Human peripheral blood lymphocytes are stained with FITC Anti-Human CD4 Antibody and PE/Cyanine5 Anti-Human CD62L Antibody[HI62L] (Left). Lymphocytes are stained with FITC Anti-Human CD4 Antibody and PE/Cyanine5 Mouse IgG2a, κ Isotype Control (Right).

### Preparation & Storage

|          |                                                                                                                                                           |
|----------|-----------------------------------------------------------------------------------------------------------------------------------------------------------|
| Storage  | Keep as concentrated solution.<br>This product can be stored at 2-8°C for 12 months. Please protected from prolonged exposure to light and do not freeze. |
| Shipping | Ice bag                                                                                                                                                   |

### Antigen Information

|                 |                                                                                                                 |
|-----------------|-----------------------------------------------------------------------------------------------------------------|
| Alternate Names | CD62L;CD62 antigen-like family member L;L-selectin;LAM-1;LECAM1;Lnhr;Ly-22;Ly22;Lymph node homing receptor;Sell |
|-----------------|-----------------------------------------------------------------------------------------------------------------|

### For Research Use Only

**Uniprot ID**

P14151

**Gene ID**

6402

**Background**

CD62L is a 74-95 kD single chain type I glycoprotein referred to as L-selectin or LECA M-1. It is expressed on most peripheral blood B cells, subsets of T and NK cells, monocytes, granulocytes, and certain hematopoietic malignant cells. CD62L binds to carbohydrates present on certain glycoforms of CD34, glycamin-1, and MAdCAM-1 and with a low affinity to anionic oligosaccharide sequences related to sialylated Lewis X (sLex, CD15s) through its C-type lectin domain. CD62L is important for the homing of naïve lymphocytes to high endothelial venules in peripheral lymph nodes and Peyer's patches. It also plays a role in leukocyte rolling on activated endothelial cells.

---

**For Research Use Only**

Toll-free: 1-888-852-8623  
Web: [www.elabscience.com](http://www.elabscience.com)

Tel: 1-832-243-6086  
Email: [techsupport@elabscience.com](mailto:techsupport@elabscience.com)

Fax: 1-832-243-6017

Rev. V1.5