

Recombinant Ly108/SLAMF6 Monoclonal Antibody

catalog number: AN300021P

Note: *Centrifuge before opening to ensure complete recovery of vial contents.*

Description

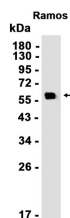
Reactivity	Human
Immunogen	Recombinant Human Ly108 / SLAMF6 protein
Host	Rabbit
Isotype	IgG
Clone	A1131
Purification	Protein A
Buffer	0.2 µm filtered solution in PBS

Applications

Recommended Dilution

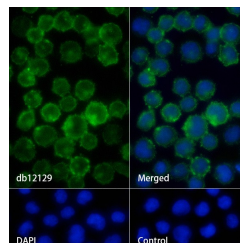
WB: 1:1000; ICC/IF: 1:500-1:1000; FC: 1:200-1:500; IP: 1:20-1:50

Data



Western blot analysis of extracts from Ramos cells at 1:1000.

Observed-MW:60 kDa
Calculated-MW:37 kDa



Immunofluorescence analysis of Jurkat cells labelling SLAMF6. The cells were fixed with 4% PFA (10min, RT) followed by treatment with 0.1% Triton X-100 (10min, RT), and blocked in 1% BSA/10% normal goat serum/0.3M glycine in 0.1% PBS-Tween 20 for 1h. The cells were then incubate (1:500) at room temperature for 1h, followed by a further incubation at room temperature for 45min with Goat Anti Rabbit IgG (H+L)-AF488 (shown in green). Nuclear DNA was labeled in blue with DAPI. Control: Secondary antibody only.

Preparation & Storage

Storage	Store at -20°C Valid for 12 months. Avoid freeze / thaw cycles.
Shipping	Ice bag

Background

The protein encoded by this gene is a type I transmembrane protein, belonging to the CD2 subfamily of the immunoglobulin superfamily. This encoded protein is expressed on Natural killer (NK), T, and B lymphocytes. It undergoes tyrosine phosphorylation and associates with the Src homology 2 domain-containing protein (SH2D1A) as well as with SH2 domain-containing phosphatases (SHPs). It functions as a coreceptor in the process of NK cell activation. It can also mediate inhibitory signals in NK cells from X-linked lymphoproliferative patients. Alternative splicing results in multiple transcript variants encoding distinct isoforms.[provided by RefSeq, May 2010]

For Research Use Only