

FITC Anti-Human CD24 Antibody[HIQB24]

Catalog Number: GFH00645C

Note: Centrifuge before opening to ensure complete recovery of vial contents.

Description

Reactivity	Human
Host	Mouse
Isotype	Mouse IgG1
Clone No.	HIQB24
Isotype Control	FITC Mouse IgG1, κ Isotype Control[MOPC-21] [Product GFH09792C]
Conjugation	FITC
Conjugation Information	FITC is designed to be excited by the Blue laser (488 nm) and detected using an optical filter centered near 530 nm (e.g., a 525/40 nm bandpass filter).
Storage Buffer	Phosphate buffered solution, pH 7.2, containing 0.09% sodium azide.

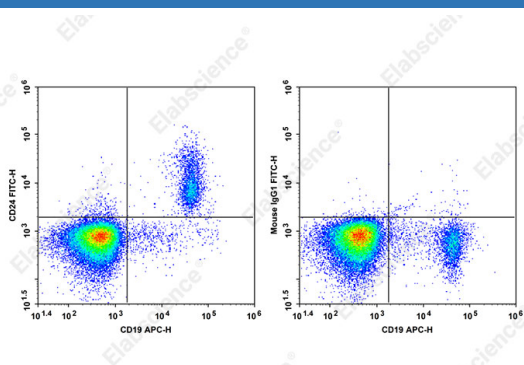
Applications

Recommended usage

FCM

Each lot of this antibody is quality control tested by flow cytometric analysis. **The amount of the reagent is suggested to be used 5 μ L of antibody per test (million cells in 100 μ L staining volume or per 100 μ L of whole blood).** Please check your vial before the experiment. Since applications vary, the appropriate dilutions must be determined for individual use.

Data



Staining of normal human peripheral blood cells with FITC Anti-Human CD24 Antibody[HIQB24] and APC Anti-Human CD19 Antibody[CB19] (left) or FITC Mouse IgG1, κ Isotype Control (right). Cells in the lymphocytes gate were used for analysis.

Preparation & Storage

Storage	Keep as concentrated solution. This product can be stored at 2-8°C for 12 months. Please protected from prolonged exposure to light and do not freeze.
Shipping	Ice bag

Antigen Information

Alternate Names	GPI linked surface mucin;Heat stable antigen;HSA;Nectadrin;Signal transducer CD24;人CD24流式抗体;CD24抗体;CD24流式抗体;人CD24;人CD24抗体;GFH00645
Uniprot ID	P25063

For Research Use Only

Gene ID

100133941

Background

CD24 is a 35-45 kD glycosylphosphatidylinositol (GPI)-linked protein also known as heat stable antigen (HSA), BA-1, Ly-52, and nectadrin. It is expressed on the surface of B cells (but not plasma cells), granulocytes, follicular dendritic cells, and epithelial cells. CD24 may play a role in the regulation of B-cell proliferation and maturation. CD24 crosslinking induces a Ca^{2+} flux in mature B cells. CD24 has been shown to interact with CD62P (P-selectin).