

Timm29 Polyclonal Antibody

catalog number: E-AB-92321

Note: Centrifuge before opening to ensure complete recovery of vial contents.

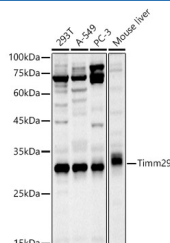
Description

Reactivity	Human;Mouse
Immunogen	Recombinant fusion protein of mouse Timm29
Host	Rabbit
Isotype	IgG
Purification	Affinity purification
Buffer	Phosphate buffered solution, pH 7.4, containing 0.05% stabilizer and 50% glycerol.

Applications Recommended Dilution

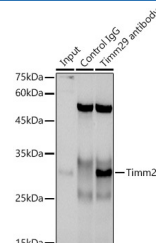
WB	1:500-1:2000
IP	1:50-1:200

Data



Western blot analysis of extracts of various cell lines using Timm29 Polyclonal Antibody at 1:1000 dilution.

Observed-MW:29 kDa
Calculated-MW:29 kDa



Immunoprecipitation analysis of 300ug extracts of A-549 cells using 3ug Timm29 Polyclonal Antibody. Western blot was performed from the immunoprecipitate using Timm29 Polyclonal Antibody at a dilution of 1:1000.

Observed-MW:29 kDa
Calculated-MW:29 kDa

Preparation & Storage

Storage	Store at -20°C Valid for 12 months. Avoid freeze / thaw cycles.
Shipping	The product is shipped with ice pack, upon receipt, store it immediately at the temperature recommended.

Background

Component of the TIM22 complex, a complex that mediates the import and insertion of multi-pass transmembrane proteins into the mitochondrial inner membrane. The TIM22 complex forms a twin-pore translocase that uses the membrane potential as the external driving force. Required for the stability of the TIM22 complex and functions in the assembly of the TIMM22 protein into the TIM22 complex. May facilitate cooperation between TIM22 and TOM complexes by interacting with TOMM40.

For Research Use Only