

## CHGA Polyclonal Antibody

catalog number: **AN005870L**

**Note:** Centrifuge before opening to ensure complete recovery of vial contents.

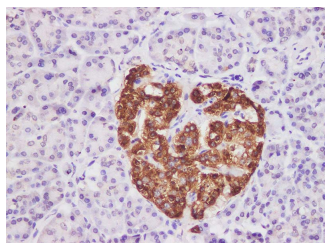
### Description

<b>Reactivity</b>	Human
<b>Immunogen</b>	Recombinant Human CHGA protein expressed by Mammalian
<b>Host</b>	Rabbit
<b>Isotype</b>	IgG
<b>Purification</b>	Antigen Affinity Purification
<b>Buffer</b>	PBS with 0.05% Proclin300, 1% protective protein and 50% glycerol, pH7.4

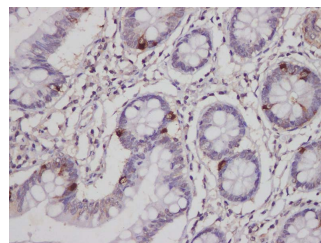
### Applications Recommended Dilution

<b>IHC</b>	1:200-1:400
------------	-------------

### Data



Immunohistochemistry of paraffin-embedded Human pancreas using CHGA Polyclonal Antibody at dilution of 1:350.



Immunohistochemistry of paraffin-embedded Human small intestine using CHGA Polyclonal Antibody at dilution of 1:350.

### Preparation & Storage

<b>Storage</b>	Store at -20°C Valid for 12 months. Avoid freeze / thaw cycles.
<b>Shipping</b>	The product is shipped with ice pack, upon receipt, store it immediately at the temperature recommended.

### Background

Human Chromogranin A (CHGA) an acidic protein and a member of the chromogranin/secretogranin family of neuroendocrine secretory proteins. It is located in secretory vesicles of neurons and endocrine cells such as islet beta cell secretory granules in pancreas. Chromogranin A expression has been observed in neuroendocrine tumors, medullary thyroid carcinoma, as well as carcinoid tumors.

### For Research Use Only