

Recombinant 4E BP1 Monoclonal Antibody

catalog number: **E-AB-81520**

Note: Centrifuge before opening to ensure complete recovery of vial contents.

Description

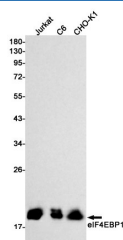
Reactivity	Human;Mouse;Rat;Hamster
Immunogen	A synthetic peptide of human eIF4EBP1
Host	Rabbit
Isotype	IgG
Clone	R06-8E6
Purification	Affinity Purified
Buffer	50mM Tris-Glycine(pH 7.4), 0.15M NaCl, 40% Glycerol, 0.05% stabilizer and 0.05% protective protein.

Applications

Recommended Dilution

WB	1:500-1:1000
IHC	1:50-1:100

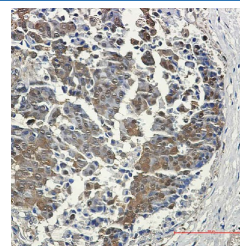
Data



Western blot detection of eIF4EBP1 in Jurkat,C6,CHO-K1 cell lysates using eIF4EBP1 Rabbit mAb(1:1000 diluted).Predicted band size:13kDa.Observed band size:15-20kDa.

Observed-MW:15 /20 kDa

Calculated-MW:13 kDa



Immunohistochemistry of eIF4EBP1 in paraffin-embedded Human breast cancer tissue using eIF4EBP1 Rabbit mAb at dilution 1:50

Preparation & Storage

Storage	Store at -20°C Valid for 12 months. Avoid freeze / thaw cycles.
Shipping	The product is shipped with ice pack,upon receipt,store it immediately at the temperature recommended.

Background

Eukaryotic translation initiation factor 4E-binding protein 1(4EBP1),is a member of 4EBPs family,which regulate the translation of a subset of mRNA by competing with eIF4G for binding to eIF4E,thus preventing the assembly of the eIF4F complex. The eIF4F facilitates the recruitment of other translation initiation factors to form the complex and then initiates cap-dependent translation.4EBP1 also mediates the regulation of protein translation by growth factors, hormones and other stimuli that signal through the MAP kinase and mTORC1 pathways. There are three forms of 4EBP1, alpha, beta and gamma.

For Research Use Only