

## Recombinant Mouse Collectin-11/COLEC11 Protein (Human Cells, His Tag)

**Catalog Number: PKSM041347**

**Note:** Centrifuge before opening to ensure complete recovery of vial contents.

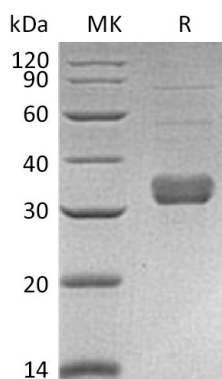
### Description

<b>Species</b>	Mouse
<b>Source</b>	HEK293 Cells-derived Mouse Collectin-11/COLEC11 protein Gln27-Leu272, with an C-terminal His
<b>Calculated MW</b>	27.1 kDa
<b>Observed MW</b>	30-35 kDa
<b>Accession</b>	Q3SXB8-1
<b>Bio-activity</b>	Not validated for activity

### Properties

<b>Purity</b>	> 95 % as determined by reducing SDS-PAGE.
<b>Endotoxin</b>	< 1.0 EU per µg of the protein as determined by the LAL method.
<b>Storage</b>	Generally, lyophilized proteins are stable for up to 12 months when stored at -20 to -80°C. Reconstituted protein solution can be stored at 4-8°C for 2-7 days. Aliquots of reconstituted samples are stable at < -20°C for 3 months.
<b>Shipping</b>	This product is provided as lyophilized powder which is shipped with ice packs.
<b>Formulation</b>	Lyophilized from a 0.2 µm filtered solution of PBS, pH 7.4. Normally 5% - 8% trehalose, mannitol and 0.01% Tween 80 are added as protectants before lyophilization. Please refer to the specific buffer information in the printed manual.
<b>Reconstitution</b>	Please refer to the printed manual for detailed information.

### Data



### Background

Mouse Collectin Kidney Protein 1 (CL-K1) is an approximately 27.1 kDa secreted protein and belongs to the COLEC10/COLEC11 family. The collectins are a group of innate immune proteins structurally characterized by their content of a carbohydrate recognition domain and a collagen-like region. Collectin-11 is highly expressed in embryonic murine craniofacial cartilage, heart, bronchi, kidney, and vertebral bodies. Collectins play important roles in the innate immune system by binding to carbohydrate antigens on microorganisms, facilitating their recognition and removal.

### For Research Use Only

Toll-free: 1-888-852-8623  
Web: [www.elabscience.com](http://www.elabscience.com)

Tel: 1-832-243-6086  
Email: [techsupport@elabscience.com](mailto:techsupport@elabscience.com)

Fax: 1-832-243-6017