

Pancreatic lipase/PTL Polyclonal Antibody

catalog number: **E-AB-40636**

Note: Centrifuge before opening to ensure complete recovery of vial contents.

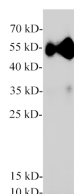
Description

Reactivity	Mouse;Rat
Immunogen	Recombinant Human Pancreatic lipase protein expressed by E.coli.
Host	Rabbit
Isotype	IgG
Purification	Antigen Affinity Purification
Buffer	PBS with 0.05% Proclin300, 1% protective protein and 50% glycerol, pH7.4

Applications Recommended Dilution

WB	1:1000-1:2000
-----------	---------------

Data



Western blot of Mouse pancreas with anti-Pancreatic lipase polyclonal antibody at 1:2000 dilution.

Observed-MW:51 kDa

Calculated-MW:51 kDa



Western blot of Rat pancreas with Pancreatic lipase polyclonal antibody at 1:2000 dilution.

Observed-MW:51 kDa

Calculated-MW:51 kDa

Preparation & Storage

Storage	Store at -20°C Valid for 12 months. Avoid freeze / thaw cycles.
Shipping	The product is shipped with ice pack, upon receipt, store it immediately at the temperature recommended.

Background

Plays an important role in fat metabolism. It preferentially splits the esters of long-chain fatty acids at positions 1 and 3, producing mainly 2-monoacylglycerol and free fatty acids, and shows considerably higher activity against insoluble emulsified substrates than against soluble ones.

For Research Use Only