

Cadherin-17/LI-cadherin/CDH17 Monoclonal Antibody

catalog number: AN200119P

Note: Centrifuge before opening to ensure complete recovery of vial contents.

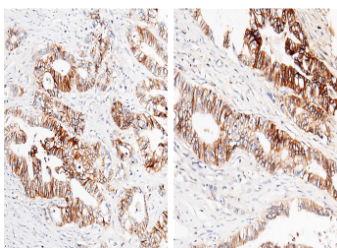
Description

Reactivity	Human
Immunogen	Recombinant Human Cadherin-17 / LI-cadherin / CDH17 protein
Host	Mouse
Isotype	IgG2b
Clone	3F9
Purification	Protein A
Buffer	0.2 µm filtered solution in PBS

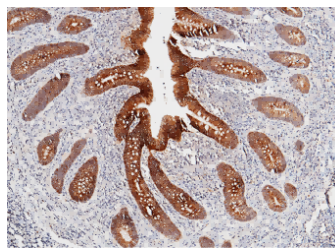
Applications Recommended Dilution

IHC-P	1:50-1:200
--------------	------------

Data



Immunohistochemistry of paraffin-embedded human rectal carcinoma using Cadherin-17 / LI-cadherin / CDH17 Monoclonal Antibody at dilution of 1:60.



Immunohistochemistry of paraffin-embedded human appendix using Cadherin-17 / LI-cadherin / CDH17 Monoclonal Antibody at dilution of 1:60.

Preparation & Storage

Storage	This antibody can be stored at 2°C-8°C for one month without detectable loss of activity. Antibody products are stable for twelve months from date of receipt when stored at -20°C to -80°C. Preservative-Free. Avoid repeated freeze-thaw cycles.
Shipping	Ice bag

Background

This gene is a member of the cadherin superfamily, genes encoding calcium-dependent, membrane-associated glycoproteins. The encoded protein is cadherin-like, consisting of an extracellular region, containing 7 cadherin domains, and a transmembrane region but lacking the conserved cytoplasmic domain. The protein is a component of the gastrointestinal tract and pancreatic ducts, acting as an intestinal proton-dependent peptide transporter in the first step in oral absorption of many medically important peptide-based drugs. The protein may also play a role in the morphological organization of liver and intestine. Alternative splicing results in multiple transcript variants.

For Research Use Only