

beta actin Polyclonal Antibody

catalog number: E-AB-40338

Note: Centrifuge before opening to ensure complete recovery of vial contents.

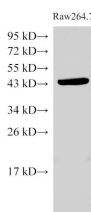
Description	
Reactivity	Human;Mouse;Rat
Immunogen	Recombinant Zebrafish Actin, cytoplasmic 2 protein
Host	Rabbit
Isotype	IgG
Purification	Antigen Affinity Purification
Conjugation	Unconjugated
Buffer	PBS with 0.05% Proclin300, 1% protective protein and 50% glycerol, pH7.4
Applications	Recommended Dilution
WB	1:3000-1:30000
IHC	1:100-1:300

Data



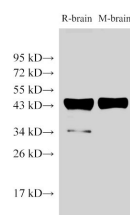
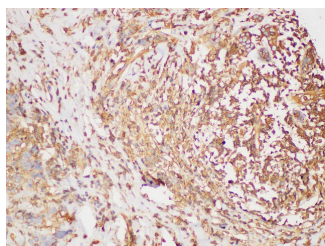
Western Blot analysis of A431 cells using beta actin Polyclonal Antibody at dilution of 1:2000

Observed-MW:41 kDa
Calculated-MW:41 kDa



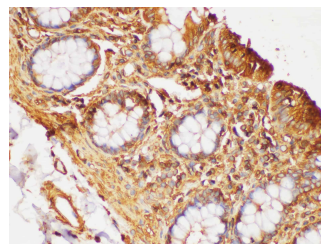
Western Blot analysis of Raw264.7 cells using beta actin Polyclonal Antibody at dilution of 1:2000

Observed-MW:41 kDa
Calculated-MW:41 kDa

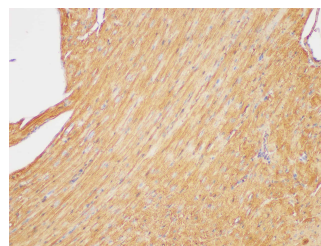


Western Blot analysis of Rat brain and Mouse brain using beta actin Polyclonal Antibody at dilution of 1:2000

Observed-MW:41 kDa
Calculated-MW:41 kDa

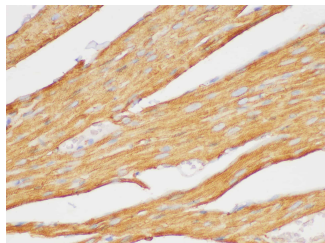


Immunohistochemistry of paraffin-embedded Human colon using beta actin Polyclonal Antibody at dilution of 1:200



Immunohistochemistry of paraffin-embedded Human breast cancer using beta actin Polyclonal Antibody at dilution of 1:200

Immunohistochemistry of paraffin-embedded Mouse heart using beta actin Polyclonal Antibody at dilution of 1:200



Immunohistochemistry of paraffin-embedded Rat heart using beta actin Polyclonal Antibody at dilution of 1:200

Preparation & Storage

Storage

Store at -20°C Valid for 12 months. Avoid freeze / thaw cycles.

Shipping

The product is shipped with ice pack, upon receipt, store it immediately at the temperature recommended.

Background

Beta actin, also named as ACTB and F-Actin, belongs to the actin family. Actins are highly conserved globular proteins that are involved in various types of cell motility and are ubiquitously expressed in all eukaryotic cells. At least six isoforms of actins are known in mammals and other vertebrates: alpha (ACTC1, cardiac muscle 1), alpha 1 (ACTA1, skeletal muscle) and 2 (ACTA2, aortic smooth muscle), beta (ACTB), gamma 1 (ACTG1) and 2 (ACTG2, enteric smooth muscle). Beta and gamma 1 are two non-muscle actin proteins. Most actins consist of 376aa, while ACTG2 (rich in muscles) has 375aa and ACTG1(found in non-muscle cells) has only 374aa. Beta actin has been widely used as the internal control in RT-PCR and Western Blotting as a 42-kDa protein. However, the 41 kDa cleaved fragment of beta actin can be generated during apoptosis process. This antibody can recognize all the actins.