

Purified Anti-Human CD6 Antibody[HI210]

catalog number: E-AB-F1314A

Note: Centrifuge before opening to ensure complete recovery of vial contents.

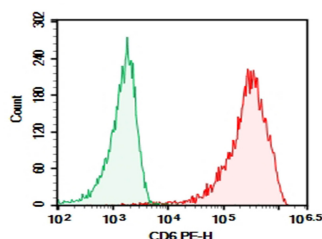
Description

Reactivity	Human
Host	Mouse
Isotype	Mouse IgG1, κ
Clone	HI210
Buffer	Phosphate-buffered solution, pH 7.2, containing 0.05% non-protein stabilizer. Dialyze to completely remove the stabilizer prior to labeling.

Applications Recommended Dilution

FCM	2 $\mu\text{g/mL}$ (1×10^5 - 5×10^5 cells)
------------	---

Data



Human peripheral blood lymphocytes were stained with 0.2 μg Purified Anti-Human CD6 Antibody[HI210] (Right) and 0.2 μg Rabbit IgG1, κ Isotype Control (Left), followed by Alexa Fluor® 647-conjugated Goat Anti-Rabbit IgG Secondary Antibody.

Preparation & Storage

Storage	Store at 4°C valid for 12 months or -20°C valid for long term storage, avoid freeze / thaw cycles.
Shipping	Ice bag

Background

CD6 is a 100-130 kD single chain transmembrane glycoprotein also known as T12. It is a member of the scavenger receptor superfamily found on T and B cell subsets, thymocytes, and acute lymphocytic leukemia cells (ALL). CD6, interacting with its ligand CD166 (also known as ALCAM), is involved in T cell development and activation, as well as thymocyte adhesion.

For Research Use Only