

Recombinant Human UBE2I/UBC9 Protein (GST Tag)

Catalog Number: PKSH033308

Note: Centrifuge before opening to ensure complete recovery of vial contents.

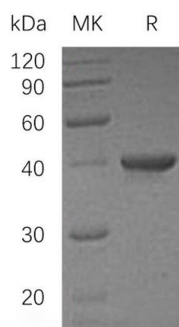
Description

| | |
|----------------------|--|
| Species | Human |
| Source | E.coli-derived Human UBE2I/UBC9 protein Met 1-Ser158, with an N-terminal GST |
| Calculated MW | 44.4 kDa |
| Observed MW | 40 kDa |
| Accession | P63279 |
| Bio-activity | Not validated for activity |

Properties

| | |
|----------------------|---|
| Purity | > 95 % as determined by reducing SDS-PAGE. |
| Concentration | Subject to label value. |
| Endotoxin | < 1.0 EU per µg of the protein as determined by the LAL method. |
| Storage | Store at < -20°C, stable for 6 months. Please minimize freeze-thaw cycles. |
| Shipping | This product is provided as liquid. It is shipped at frozen temperature with blue ice/ gel packs. Upon receipt, store it immediately at < - 20°C. |
| Formulation | Supplied as a 0.2 µm filtered solution of 50mM HEPES, 150mM NaCl, pH 7.5. |

Data



> 95 % as determined by reducing SDS-PAGE.

Background

SUMO-Conjugating Enzyme UBC9 (UBC9) belongs to the ubiquitin-conjugating enzyme family. UBC9 is homologous to ubiquitin-conjugating enzymes (E2s). However; instead of conjugating ubiquitin; UBC9 conjugates a ubiquitin homologue; Small Ubiquitin-Like Modifier 1 (SUMO-1). The conjugation of ubiquitin requires the activities of ubiquitin-activating (E1) and conjugating (E2) enzymes. It is suggested that UBC9 might play a role in DNA repair and perhaps even in aging.

For Research Use Only

Toll-free: 1-888-852-8623
Web: www.elabscience.com

Tel: 1-832-243-6086
Email: techsupport@elabscience.com

Fax: 1-832-243-6017