

## DNALI1 Polyclonal Antibody

catalog number: **E-AB-67606**

**Note:** *Centrifuge before opening to ensure complete recovery of vial contents.*

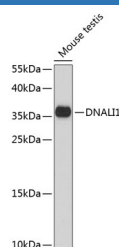
### Description

<b>Reactivity</b>	Mouse
<b>Immunogen</b>	Recombinant fusion protein of human DNALI1 (NP_003453.2).
<b>Host</b>	Rabbit
<b>Isotype</b>	IgG
<b>Purification</b>	Affinity purification
<b>Buffer</b>	Phosphate buffered solution, pH 7.4, containing 0.05% stabilizer and 50% glycerol.

### Applications Recommended Dilution

<b>WB</b>	1:500-1:2000
-----------	--------------

### Data



Western blot analysis of extracts of Mouse testis using DNALI1 Polyclonal Antibody at dilution of 1:1000.

**Observed-MV:36 kDa**

**Calculated-MV:15 kDa/29 kDa**

### Preparation & Storage

<b>Storage</b>	Store at -20°C Valid for 12 months. Avoid freeze / thaw cycles.
<b>Shipping</b>	The product is shipped with ice pack, upon receipt, store it immediately at the temperature recommended.

### Background

This gene is the human homolog of the Chlamydomonas inner dynein arm gene, p28. The precise function of this gene is not known, however, it is a potential candidate for immotile cilia syndrome (ICS). Ultrastructural defects of the inner dynein arms are seen in patients with ICS. Immotile mutant strains of Chlamydomonas, a biflagellated algae, exhibit similar defects.

### For Research Use Only