

## GARNL3 Polyclonal Antibody

**catalog number:** E-AB-17988

**Note:** Centrifuge before opening to ensure complete recovery of vial contents.

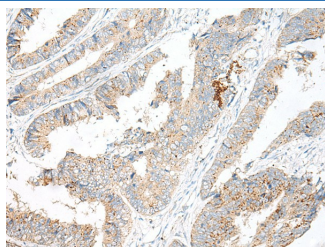
### Description

<b>Reactivity</b>	Human;Mouse
<b>Immunogen</b>	Synthetic peptide of human GARNL3
<b>Host</b>	Rabbit
<b>Isotype</b>	IgG
<b>Purification</b>	Antigen affinity purification
<b>Buffer</b>	Phosphate buffered solution, pH 7.4, containing 0.05% stabilizer and 50% glycerol.

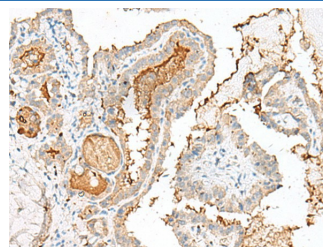
### Applications Recommended Dilution

<b>IHC</b>	1:40-1:200
------------	------------

### Data



Immunohistochemistry of paraffin-embedded Human colorectal cancer tissue using GARNL3 Polyclonal Antibody at dilution of 1:60(×200)



Immunohistochemistry of paraffin-embedded Human thyroid cancer tissue using GARNL3 Polyclonal Antibody at dilution of 1:60(×200)

### Preparation & Storage

<b>Storage</b>	Store at -20°C Valid for 12 months. Avoid freeze / thaw cycles.
<b>Shipping</b>	The product is shipped with ice pack, upon receipt, store it immediately at the temperature recommended.

### Background

The function of this protein remains unknown.

### For Research Use Only