

Recombinant PLK1 Monoclonal Antibody

catalog number: **AN300673L**

Note: Centrifuge before opening to ensure complete recovery of vial contents.

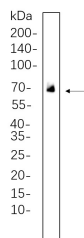
Description

| | |
|---------------------|---|
| Reactivity | Human;Mouse;Rat |
| Immunogen | Recombinant Human PLK1 protein |
| Host | Rabbit |
| Isotype | IgG, κ |
| Clone | 6G9 |
| Purification | Protein A |
| Buffer | PBS, 50% glycerol, 0.05% Proclin 300, 0.05% protein protectant. |

Applications Recommended Dilution

| | |
|-----------|----------------|
| WB | 1:2000-1:10000 |
|-----------|----------------|

Data



Western Blot with Recombinant PLK1 Monoclonal Antibody at dilution of 1:1000 dilution. Lane A: U-14 whole cell lysate.

Observed-MW:68 kDa

Calculated-MW:68 kDa

Preparation & Storage

| | |
|-----------------|---|
| Storage | Store at -20°C Valid for 12 months. Avoid freeze / thaw cycles. |
| Shipping | Ice bag |

Background

The Ser/Thr protein kinase encoded by this gene belongs to the CDC5/Polo subfamily. It is highly expressed during mitosis and elevated levels are found in many different types of cancer. Depletion of this protein in cancer cells dramatically inhibited cell proliferation and induced apoptosis; hence, it is a target for cancer therapy.

For Research Use Only