

MB Polyclonal Antibody

catalog number: E-AB-40504

Note: Centrifuge before opening to ensure complete recovery of vial contents.

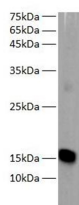
Description

| | |
|---------------------|--|
| Reactivity | Human;Mouse;Rat;Zebrafish |
| Immunogen | Recombinant human MB protein expressed by E.coli |
| Host | Rabbit |
| Isotype | IgG |
| Purification | Antigen Affinity Purification |
| Buffer | PBS with 0.05% proclin 300, 1% protective protein and 50% glycerol,pH7.4 |

Applications Recommended Dilution

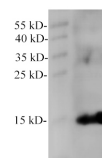
| | |
|-----------|-------------|
| WB | 1:1000-5000 |
|-----------|-------------|

Data



Western blot of Zebrafish whole lysates with anti-MB rabbit polyclonal antibody at dilution of 1:1000.

Observed-MV:16 kDa
Calculated-MV:16 kDa



Western blot of MCF7 with anti-MB rabbit polyclonal antibody at dilution of 1:1000.

Observed-MV:16 kDa
Calculated-MV:16 kDa

Preparation & Storage

| | |
|-----------------|--|
| Storage | Store at -20°C Valid for 12 months. Avoid freeze / thaw cycles. |
| Shipping | The product is shipped with ice pack,upon receipt,store it immediately at the temperature recommended. |

Background

Myoglobin (symbol Mb or MB) is an iron- and oxygen-binding protein found in the muscle tissue of vertebrates in general and in almost all mammals. Myoglobin is released from damaged muscle tissue such as heart, making it a sensitive marker for muscle injury.

For Research Use Only

Toll-free: 1-888-852-8623
Web: www.elabscience.com

Tel: 1-832-243-6086
Email: techsupport@elabscience.com

Fax: 1-832-243-6017

Rev. V1.8