

SNAI1 Polyclonal Antibody

catalog number: E-AB-70119

Note: Centrifuge before opening to ensure complete recovery of vial contents.

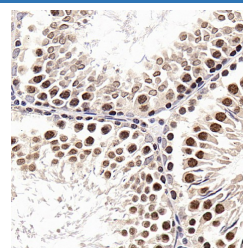
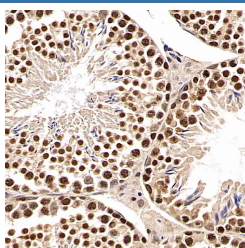
Description

Reactivity	Mouse;Rat
Immunogen	KLH conjugated Synthetic peptide corresponding to Mouse Snail
Host	Rabbit
Isotype	IgG
Purification	Affinity purification
Conjugation	Unconjugated
Buffer	Phosphate buffered solution, pH 7.4, containing 0.05% stabilizer, 1% protein protectant and 50% glycerol.

Applications Recommended Dilution

IHC	1:500-1:1000
------------	--------------

Data



Immunohistochemistry analysis of paraffin-embedded mouse testis using SNAI1 Polyclonal Antibody at dilution of 1:600. Immunohistochemistry analysis of paraffin-embedded Rat testis using SNAI1 Polyclonal Antibody at dilution of 1:600.

Preparation & Storage

Storage	Store at -20°C Valid for 12 months. Avoid freeze / thaw cycles.
Shipping	The product is shipped with ice pack, upon receipt, store it immediately at the temperature recommended.

Background

The Drosophila embryonic protein snail is a zinc finger transcriptional repressor which downregulates the expression of ectodermal genes within the mesoderm. The nuclear protein encoded by this gene is structurally similar to the Drosophila snail protein, and is also thought to be critical for mesoderm formation in the developing embryo. At least two variants of a similar processed pseudogene have been found on chromosome 2.