

## CD38 Polyclonal Antibody

catalog number: D-AB-10217L

**Note:** Centrifuge before opening to ensure complete recovery of vial contents.

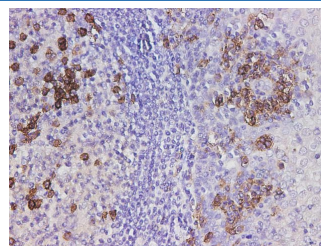
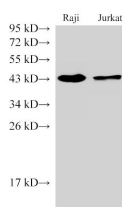
### Description

|                     |  |
|---------------------|--|
| <b>Reactivity</b>   | Human  |
| <b>Immunogen</b>    | Recombinant MACFA CD38 protein expressed by E.coli                       |
| <b>Host</b>         | Rabbit   |
| <b>Isotype</b>      | IgG  |
| <b>Purification</b> | Antigen Affinity Purification  |
| <b>Buffer</b>       | PBS with 0.05% Proclin300, 1% protective protein and 50% glycerol, pH7.4 |

### Applications

| Applications | Recommended Dilution |
|--------------|----------------------|
| <b>WB</b>    | 1:500-1:2000         |
| <b>IHC</b>   | 1:5000-1:10000       |

### Data



Western Blot analysis of Raji and Jurkat cells using CD38 Polyclonal Antibody at dilution of 1:1000

Immunohistochemistry of paraffin-embedded Human tonsil using CD38 Polyclonal Antibody at dilution of 1:5000

**Observed-MW:45 kDa**

**Calculated-MW:13,34 kDa**

### Preparation & Storage

|                 |  |
|-----------------|--|
| <b>Storage</b>  | Store at -20°C Valid for 12 months. Avoid freeze / thaw cycles.  |
| <b>Shipping</b> | The product is shipped with ice pack, upon receipt, store it immediately at the temperature recommended. |

### Background

CD38(cluster of differentiation38), also known as cyclic ADP ribose hydrolase is a glycoprotein found on the surface of many immune cells (white blood cells), including CD4+, CD8+, B lymphocytes and natural killer cells. CD38 also functions in cell adhesion, signal transduction and calcium signaling. In humans, the CD38 protein is encoded by the CD38 gene which is located on chromosome 4.

### For Research Use Only