

## Recombinant Human Interleukin-17F/IL-17F Protein

**Catalog Number: PKSH032623**

**Note:** Centrifuge before opening to ensure complete recovery of vial contents.

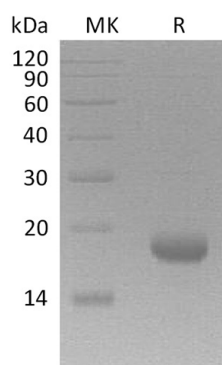
### Description

<b>Species</b>	Human
<b>Source</b>	HEK293 Cells-derived Human Interleukin-17F;IL-17F protein Arg31-Gln163
<b>Mol_Mass</b>	14.9 kDa
<b>Accession</b>	AAH70124.1
<b>Bio-activity</b>	Not validated for activity

### Properties

<b>Purity</b>	> 95 % as determined by reducing SDS-PAGE.
<b>Endotoxin</b>	< 1.0 EU per µg of the protein as determined by the LAL method.
<b>Storage</b>	Generally, lyophilized proteins are stable for up to 12 months when stored at -20 to -80 °C. Reconstituted protein solution can be stored at 4-8°C for 2-7 days. Aliquots of reconstituted samples are stable at < -20°C for 3 months.
<b>Shipping</b>	This product is provided as lyophilized powder which is shipped with ice packs.
<b>Formulation</b>	Lyophilized from a 0.2 µm filtered solution of 20mM PB, 150mM NaCl, pH 7.4. Normally 5% - 8% trehalose, mannitol and 0.01% Tween 80 are added as protectants before lyophilization.
	Please refer to the specific buffer information in the printed manual.
<b>Reconstitution</b>	Please refer to the printed manual for detailed information.

### Data



> 95 % as determined by reducing SDS-PAGE.

### Background

Interleukin-17F (IL-17F) exists in a disulfide-linked heterodimer that belongs to the IL-17 family. IL-17F is expressed in activated; but not resting; CD4+ T-cells and activated monocytes. IL-17F has been shown to stimulate the production of several other cytokines; including IL-6; IL-8; and granulocyte colony-stimulating factor. IL-17F can regulate cartilage matrix turnover and stimulates PBMC and T-cell proliferation. IL-17F is also found to inhibit the angiogenesis of endothelial cells and induce endothelial cells to produce IL2; TGFB1/TGFB; and monocyte chemoattractant protein-1. Defects in IL-17F are the cause of familial candidiasis type 6 (CANDF6).

### For Research Use Only