

(KO Validated) IGF1R Polyclonal Antibody

catalog number: **E-AB-68249**

Note: Centrifuge before opening to ensure complete recovery of vial contents.

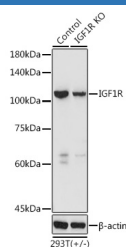
Description

Reactivity	Human;Mouse;Rat
Immunogen	A synthetic peptide of human IGF1R
Host	Rabbit
Isotype	IgG
Purification	Affinity purification
Buffer	Phosphate buffered solution, pH 7.4, containing 0.05% stabilizer and 50% glycerol.

Applications Recommended Dilution

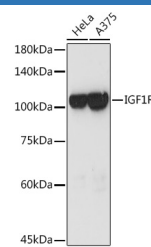
WB	1:500-1:2000
-----------	--------------

Data



Western blot analysis of extracts from normal (control) and IGF1R knockout (KO) 293T cells using IGF1R Polyclonal Antibody at 1:3000 dilution.

Observed-MV:100 kDa
Calculated-MV:154 kDa



Western blot analysis of extracts of various cell lines using IGF1R Polyclonal Antibody at 1:3000 dilution.

Observed-MV:100 kDa
Calculated-MV:154 kDa

Preparation & Storage

Storage	Store at -20°C Valid for 12 months. Avoid freeze / thaw cycles.
Shipping	The product is shipped with ice pack, upon receipt, store it immediately at the temperature recommended.

Background

This receptor binds insulin-like growth factor with a high affinity. It has tyrosine kinase activity. The insulin-like growth factor I receptor plays a critical role in transformation events. Cleavage of the precursor generates alpha and beta subunits. It is highly overexpressed in most malignant tissues where it functions as an anti-apoptotic agent by enhancing cell survival. Alternatively spliced transcript variants encoding distinct isoforms have been found for this gene.

For Research Use Only