

## Recombinant Human Interferon $\omega$ -1/IFNW1 Protein (His Tag)

Catalog Number: PKSH032613

**Note:** Centrifuge before opening to ensure complete recovery of vial contents.

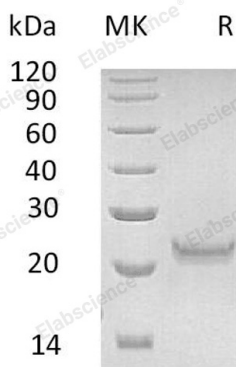
### Description

<b>Species</b>	Human
<b>Source</b>	HEK293 Cells-derived Human Interferon $\omega$ -1;IFNW1 protein Leu22-Ser195, with an C-terminal His
<b>Calculated MW</b>	21.1 kDa
<b>Observed MW</b>	24 kDa
<b>Accession</b>	P05000
<b>Bio-activity</b>	Not validated for activity

### Properties

<b>Purity</b>	> 95 % as determined by reducing SDS-PAGE.
<b>Endotoxin</b>	< 1.0 EU per $\mu$ g of the protein as determined by the LAL method.
<b>Storage</b>	Generally, lyophilized proteins are stable for up to 12 months when stored at -20 to -80°C. Reconstituted protein solution can be stored at 4-8°C for 2-7 days. Aliquots of reconstituted samples are stable at < -20°C for 3 months.
<b>Shipping</b>	This product is provided as lyophilized powder which is shipped with ice packs.
<b>Formulation</b>	Lyophilized from a 0.2 $\mu$ m filtered solution of 20mM PB, 150mM NaCl, pH 7.4. Normally 5% - 8% trehalose, mannitol and 0.01% Tween 80 are added as protectants before lyophilization. Please refer to the specific buffer information in the printed manual.
<b>Reconstitution</b>	Please refer to the printed manual for detailed information.

### Data



> 95 % as determined by reducing SDS-PAGE.

### Background

Interferon omega-1 is also known as Interferon alpha-II-1 and IFNW1. It is a Secreted protein that in humans is encoded by the IFNW1 gene. IFNW1 belongs to the alpha/beta interferon family. Type I IFNs consist of IFN  $\alpha$ ,  $\beta$ ,  $\tau$ , and  $\omega$  and bind to the type I IFN receptor, whereas IFN- $\gamma$  is the only type II IFN and is specific for the type II IFN receptor. IFNW1 is a recently discovered protein structurally related to IFN-alpha and -beta. It has been shown that IFN-omega 1 similar to that of other human class I IFNs; potent antiviral activity was also observed on cells of bovine and ovine but not of equine or murine origin.

### For Research Use Only

Toll-free: 1-888-852-8623  
Web: [www.elabscience.com](http://www.elabscience.com)

Tel: 1-832-243-6086  
Email: [techsupport@elabscience.com](mailto:techsupport@elabscience.com)

Fax: 1-832-243-6017