

Recombinant Human IL-17A&IL-17F Heterodimer Protein (His Tag)

Catalog Number: PKSH032619

Note: Centrifuge before opening to ensure complete recovery of vial contents.

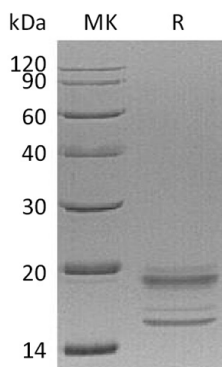
Description

Species	Human
Source	HEK293 Cells-derived Human IL-17A&IL-17F Heterodimer protein Gly24-Ala155&Arg31-Gln163, with an C-terminal His
Calculated MW	15.1&16 kDa
Observed MW	15-25 kDa
Accession	Q16552&AAH70124.1
Bio-activity	Loaded Biotinylated Human IL-17RA-His-Avi on SA Biosensor, can bind Human IL-17A&17F-His with an affinity constant of 8.6 pM as determined in BLI assay.

Properties

Purity	> 95 % as determined by reducing SDS-PAGE.
Endotoxin	< 1.0 EU per µg of the protein as determined by the LAL method.
Storage	Generally, lyophilized proteins are stable for up to 12 months when stored at -20 to -80 °C. Reconstituted protein solution can be stored at 4-8°C for 2-7 days. Aliquots of reconstituted samples are stable at < -20°C for 3 months.
Shipping	This product is provided as lyophilized powder which is shipped with ice packs.
Formulation	Lyophilized from a 0.2 µm filtered solution of 20mM PB, 150mM NaCl, 1mM EDTA, pH 7.4. Normally 5% - 8% trehalose, mannitol and 0.01% Tween 80 are added as protectants before lyophilization. Please refer to the specific buffer information in the printed manual.
Reconstitution	Please refer to the printed manual for detailed information.

Data



> 95 % as determined by reducing SDS-PAGE.

Background

The IL-17 family include IL-17A, IL-17B, IL-17C, IL-17D, IL-17E (also called IL-25), and IL-17F. The family is comprised of at least six proinflammatory cytokines that share a conserved cysteine-knot structure but diverge at the N-terminus. All members of the IL-17 family have a similar protein structure, with four highly conserved cysteine residues critical to their 3-dimensional shape, yet they have no sequence similarity to any other known cytokines. IL-17 family members are glycoproteins secreted as dimers that induce local cytokine production and recruit granulocytes to sites of inflammation. IL-17 is induced by IL-15 and IL-23, mainly in activated CD4⁺ T cells distinct from Th1 or Th2 cells. IL-17F is the most homologous to IL-17, but is induced only by IL-23 in activated monocytes.