

Recombinant Human Follitropin Subunit β /FSHB Protein (His Tag)

Catalog Number: PKSH032456

Note: Centrifuge before opening to ensure complete recovery of vial contents.

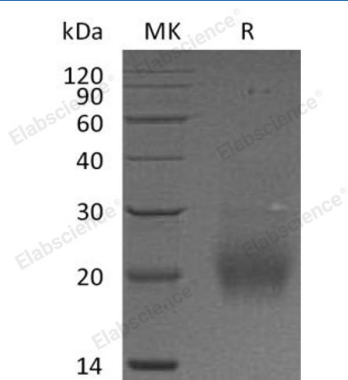
Description

Species	Human
Source	HEK293 Cells-derived Human Follitropin Subunit β /FSHB protein Asn19-Glu129, with an C-terminal His
Calculated MW	13.5 kDa
Observed MW	21 kDa
Accession	P01225
Bio-activity	Not validated for activity

Properties

Purity	> 90 % as determined by reducing SDS-PAGE.
Endotoxin	< 1.0 EU per μ g of the protein as determined by the LAL method.
Storage	Generally, lyophilized proteins are stable for up to 12 months when stored at -20 to -80 °C. Reconstituted protein solution can be stored at 4-8°C for 2-7 days. Aliquots of reconstituted samples are stable at < -20°C for 3 months.
Shipping	This product is provided as lyophilized powder which is shipped with ice packs.
Formulation	Lyophilized from a 0.2 μ m filtered solution of PBS, pH 7.4. Normally 5% - 8% trehalose, mannitol and 0.01% Tween 80 are added as protectants before lyophilization. Please refer to the specific buffer information in the printed manual.
Reconstitution	Please refer to the printed manual for detailed information.

Data



> 90 % as determined by reducing SDS-PAGE.

Background

Follitropin Subunit β (FSHB) is a secreted protein that belongs to the glycoprotein hormones subunit β family. The pituitary glycoprotein hormone family includes follicle-stimulating hormone, luteinizing hormone, chorionic gonadotropin, and thyroid-stimulating hormone. FSHB exists in a heterodimer of a common α chain and an unique β chain that confers biological specificity to thyrotropin, lutropin, follitropin, and gonadotropin. FSHB stimulates development of follicle and spermatogenesis in the reproductive organs. Defects in FSHB are a cause of isolated follicle-stimulating hormone deficiency (IFSHD).

For Research Use Only