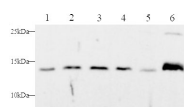


Cyt-C Polyclonal Antibody

catalog number: D-AB-10419L

Note: Centrifuge before opening to ensure complete recovery of vial contents.

Description	
Reactivity	Human;Mouse
Immunogen	Recombinant Human Cyt-C protein expressed by E.coli
Host	Rabbit
Isotype	IgG
Purification	Antigen Affinity Purification
Conjugation	Unconjugated
Buffer	PBS with 0.05% Proclin300, 1% protective protein and 50% glycerol, pH7.4
Applications	Recommended Dilution
WB	1:250-1:500
Data	



Western blot with Cyt-C Polyclonal antibody at dilution of 1:500.lane 1:HepG2 whole cell lysate,lane 2:MCF-7 whole cell lysate,lane 3:Jurkat whole cell lysate,lane 4:Molt-4 whole cell lysate,lane 5:C2C12 whole cell lysate,lane 6:Mouse brain

Observed-MW:14 kDa

Calculated-MW:12 kDa

Preparation & Storage	
Storage	Store at -20°C Valid for 12 months. Avoid freeze / thaw cycles.
Shipping	The product is shipped with ice pack,upon receipt,store it immediately at the temperature recommended.

Background	
<p>Cytochrome c is a 12-15 kDa electron transporting protein located in the inner mitochondrial membrane. As a part of respiratory chain,cytochrome c plays a critical role in the process of oxidative phosphorylation and ATP producing. Besides,cytochrome c also gets implicated in apoptosis process. Upon apoptotic stimulation,cytochrome c can be released from mitochondria into cytoplasm,which is required for caspase-3 activation and the occurrence of apoptosis.</p>	