

GOLM1/GP73 Monoclonal Antibody

catalog number: **AN200222P**

Note: Centrifuge before opening to ensure complete recovery of vial contents.

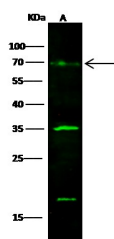
Description

Reactivity	Human
Immunogen	Recombinant Human GOLM1/GP73 Protein
Host	Mouse
Isotype	IgG1
Clone	4B7
Purification	Protein A
Buffer	0.2 µm filtered solution in PBS

Applications

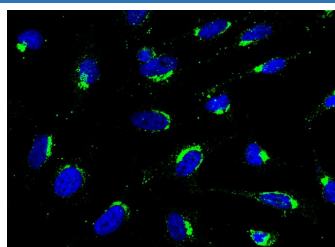
Applications	Recommended Dilution
WB	1:500-1:1000
ICC/IF	1:100-1:500

Data



Western Blot with GP73 Monoclonal Antibody at dilution of 1:500 dilution. Lane A: 293T Whole Cell Lysate, Lysates/proteins at 30 µg per lane.

Observed-MW:75 kDa
Calculated-MW:45 kDa



Immunofluorescence analysis of GP73 in HeLa cells. Cells were fixed with 4% PFA, permeabilized with 0.3% Triton X-100 in PBS, blocked with 10% serum, and incubated with mouse anti-Human GP73 monoclonal antibody (1:300) at 4°C overnight. Then cells were stained with the Alexa Fluor® 488-conjugated Goat Anti-mouse IgG secondary antibody(green) and counterstained with DAPI(blue).

Preparation & Storage

Storage	This antibody can be stored at 2°C-8°C for one month without detectable loss of activity. Antibody products are stable for twelve months from date of receipt when stored at -20°C to -80°C. Preservative-Free. Avoid repeated freeze-thaw cycles.
Shipping	Ice bag

Background

The Golgi complex plays a key role in the sorting and modification of proteins exported from the endoplasmic reticulum. The protein encoded by this gene is a type II Golgi transmembrane protein. It processes proteins synthesized in the rough endoplasmic reticulum and assists in the transport of protein cargo through the Golgi apparatus. The expression of this gene has been observed to be upregulated in response to viral infection. Alternatively spliced transcript variants encoding the same protein have been described for this gene.

For Research Use Only