

## Recombinant Human Lyn Kinase Protein (GST Tag)

**Catalog Number:** PKSH030378

**Note:** Centrifuge before opening to ensure complete recovery of vial contents.

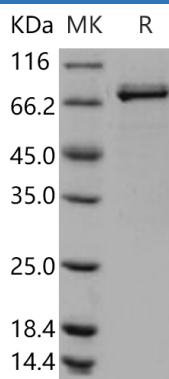
### Description

<b>Species</b>	Human
<b>Source</b>	Baculovirus-Insect Cells-derived Human Lyn Kinase protein Met 1-Pro 512, with an N-terminal GST
<b>Calculated MW</b>	84.8 kDa
<b>Observed MW</b>	75 kDa
<b>Accession</b>	NP_002341.1
<b>Bio-activity</b>	The specific activity was determined to be 30 nmol/min/mg using Poly(Glu, Tyr) 4:1 as substrate.

### Properties

<b>Purity</b>	> 94 % as determined by reducing SDS-PAGE.
<b>Concentration</b>	Subject to label value.
<b>Endotoxin</b>	< 1.0 EU per µg of the protein as determined by the LAL method.
<b>Storage</b>	Store at < -20°C, stable for 6 months. Please minimize freeze-thaw cycles.
<b>Shipping</b>	This product is provided as liquid. It is shipped at frozen temperature with blue ice/ gel packs. Upon receipt, store it immediately at < - 20°C.
<b>Formulation</b>	Supplied as sterile solution of 50mM Tris, 100mM NaCl, pH 8.0, 0.5mM Reduced Glutathione, 10% glycerol, 0.5mM PMSF

### Data



> 94 % as determined by reducing SDS-PAGE.

### Background

#### For Research Use Only

Toll-free: 1-888-852-8623  
Web: [www.elabscience.com](http://www.elabscience.com)

Tel: 1-832-243-6086  
Email: [techsupport@elabscience.com](mailto:techsupport@elabscience.com)

Fax: 1-832-243-6017

Tyrosine-protein kinase Lyn is a member of the Src family of protein tyrosine kinases, which is mainly expressed in hematopoietic cells, in neural tissues liver, and adipose tissue. Tyrosine-protein kinase Lyn has many functions. Lyn kinase may down regulate expression of stem cell growth factor receptor (KIT). Lyn kinase Acts as an effector of EpoR (erythropoietin receptor) in controlling KIT expression and may play a central role in erythroid differentiation during the switch between proliferation and maturation. Lyn kinase also acts as a positive regulator of cell movement while negatively regulating adhesion to stromal cells by inhibiting the ICAM-1-binding activity of beta-2 integrins. Lyn kinase relays suppressing signals from the chemokine receptor CXCR4 to beta-2 integrin LFA-1 in hematopoietic precursor s. This kinase is Involved in induction of stress-activated protein kinase (SAPK), but not ERK or p38 MAPK, in response to genotoxic agents. Tyrosine-protein kinase Lyn Required for the initiation of the B-cell response, but also for its down-regulation and termination. It also Plays an important role in the regulation of B-cell differentiation, proliferation, survival and apoptosis, and is important for immune self-tolerance. It has been reported that Lyn kinase plays a role in the inflammatory response to bacterial lipopolysaccharide. Lyn kinase Mediates the responses to cytokines and growth factors in hematopoietic progenitors, platelets, erythrocytes, and in mature myeloid cells.

## For Research Use Only

Toll-free: 1-888-852-8623  
Web: [www.elabscience.com](http://www.elabscience.com)

Tel: 1-832-243-6086  
Email: [techsupport@elabscience.com](mailto:techsupport@elabscience.com)

Fax: 1-832-243-6017