

## TRPA1 Polyclonal Antibody

**catalog number: E-AB-16104**

**Note:** Centrifuge before opening to ensure complete recovery of vial contents.

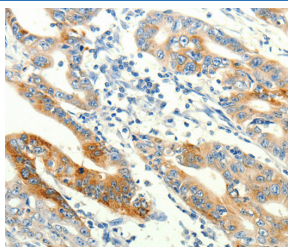
### Description

<b>Reactivity</b>	Human
<b>Immunogen</b>	Synthetic peptide of human TRPA1
<b>Host</b>	Rabbit
<b>Isotype</b>	IgG
<b>Purification</b>	Affinity purification
<b>Buffer</b>	Phosphate buffered solution, pH 7.4, containing 0.05% stabilizer and 50% glycerol.

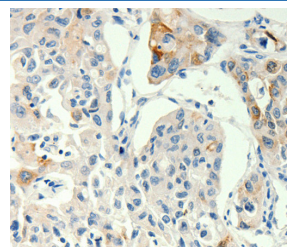
### Applications Recommended Dilution

<b>IHC</b>	1:25-1:100
------------	------------

### Data



Immunohistochemistry of paraffin-embedded Human gastric cancer tissue using TRPA1 Polyclonal Antibody at dilution 1:60



Immunohistochemistry of paraffin-embedded Human lung cancer tissue using TRPA1 Polyclonal Antibody at dilution 1:60

### Preparation & Storage

<b>Storage</b>	Store at -20°C Valid for 12 months. Avoid freeze / thaw cycles.
<b>Shipping</b>	The product is shipped with ice pack, upon receipt, store it immediately at the temperature recommended.

### Background

The structure of the protein encoded by this gene is highly related to both the protein ankyrin and transmembrane proteins. The specific function of this protein has not yet been determined; however, studies indicate the function may involve a role in signal transduction and growth control.

### For Research Use Only